

Product datasheet for **TA324697**

NEUROD1 Rabbit Polyclonal Antibody

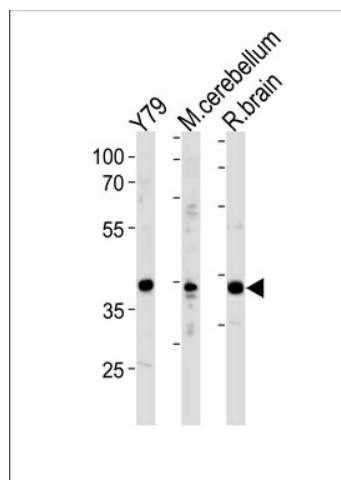
Product data:

Product Type:	Primary Antibodies
Applications:	WB
Recommended Dilution:	WB: 1:1000
Reactivity:	Human, Mouse, Rat
Host:	Rabbit
Isotype:	IgG
Clonality:	Polyclonal
Immunogen:	This NeuroD1 antibody is generated from rabbits immunized with a KLH conjugated synthetic peptide between 318-348 amino acids from the C-terminal region of human NeuroD1.
Formulation:	Purified polyclonal antibody supplied in PBS with 0.09% (W/V) sodium azide.
Concentration:	lot specific
Purification:	This antibody is prepared by Saturated Ammonium Sulfate (SAS) precipitation followed by dialysis against PBS.
Conjugation:	Unconjugated
Storage:	Store at -20°C as received.
Stability:	Stable for 12 months from date of receipt.
Predicted Protein Size:	39920 Da
Gene Name:	neuronal differentiation 1
Database Link:	NP_002491 Entrez Gene 18012 Mouse Entrez Gene 29458 Rat Entrez Gene 4760 Human Q13562
Synonyms:	BETA2; BHF-1; bHLHa3; MODY6; NEUROD
Protein Families:	Adult stem cells, Druggable Genome, Embryonic stem cells, ES Cell Differentiation/IPS, Transcription Factors
Protein Pathways:	Maturity onset diabetes of the young



[View online »](#)

Product images:



NeuroD1 Antibody (I333) (Cat. #TA324697) western blot analysis in Y79 cell line, mouse cerebellum and rat brain tissue lysates (35ug/lane). This demonstrates the NeuroD1 antibody detected the NeuroD1 protein (arrow).