

## Product datasheet for **TA324695**

### NF-kB p65 (RELA) Rabbit Polyclonal Antibody

#### Product data:

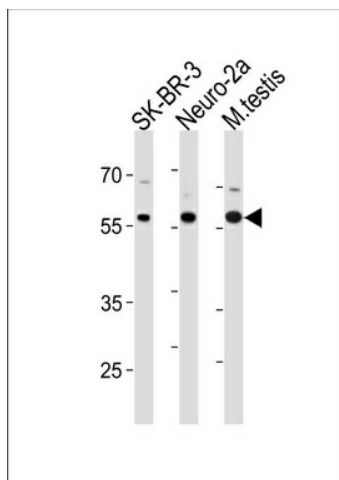
Product Type:	Primary Antibodies
Applications:	WB
Recommended Dilution:	WB: 1:1000
Reactivity:	Human, Mouse
Host:	Rabbit
Isotype:	IgG
Clonality:	Polyclonal
Immunogen:	This RELA antibody is generated from rabbits immunized with a KLH conjugated synthetic peptide between 516-542 amino acids from the C-terminal region of human RELA.
Formulation:	Purified polyclonal antibody supplied in PBS with 0.09% (W/V) sodium azide.
Concentration:	lot specific
Purification:	This antibody is purified through a protein A column, followed by peptide affinity purification.
Conjugation:	Unconjugated
Storage:	Store at -20°C as received.
Stability:	Stable for 12 months from date of receipt.
Predicted Protein Size:	60219 Da
Gene Name:	RELA proto-oncogene, NF-kB subunit
Database Link:	<a href="#">NP_068810</a> <a href="#">Entrez Gene 19697 Mouse</a> <a href="#">Entrez Gene 5970 Human</a> <a href="#">Q04206</a>
Synonyms:	NFKB3; p65
Protein Families:	Druggable Genome, Transcription Factors



[View online »](#)

**Protein Pathways:**

Acute myeloid leukemia, Adipocytokine signaling pathway, Apoptosis, B cell receptor signaling pathway, Chemokine signaling pathway, Chronic myeloid leukemia, Cytosolic DNA-sensing pathway, Epithelial cell signaling in Helicobacter pylori infection, MAPK signaling pathway, Neurotrophin signaling pathway, NOD-like receptor signaling pathway, Pancreatic cancer, Pathways in cancer, Prostate cancer, RIG-I-like receptor signaling pathway, Small cell lung cancer, T cell receptor signaling pathway, Toll-like receptor signaling pathway

**Product images:**

RELA Antibody (pS536) (Cat. #TA324695) western blot analysis in SK-BR-3, mouse Neuro-2a cell line and mouse testis tissue lysates (35ug/lane). This demonstrates the RELA antibody detected the RELA protein (arrow).