

Product datasheet for **TA324694S**

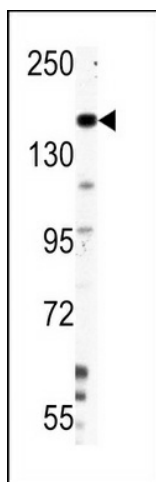
Nestin (NES) Rabbit Polyclonal Antibody

Product data:

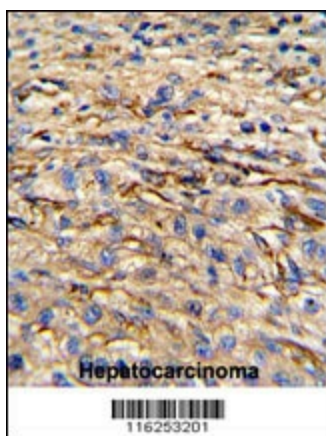
Product Type:	Primary Antibodies
Applications:	FC, IF, IHC, WB
Recommended Dilution:	IF: 1:200, WB: 1:1000, IHC: 1:50~100, FC: 1:10~50
Reactivity:	Human
Host:	Rabbit
Isotype:	IgG
Clonality:	Polyclonal
Immunogen:	This Nestin antibody is generated from rabbits immunized with a KLH conjugated synthetic peptide between 1389-1416 amino acids from human Nestin.
Formulation:	Purified polyclonal antibody supplied in PBS with 0.09% (W/V) sodium azide.
Concentration:	lot specific
Purification:	This antibody is purified through a protein A column, followed by peptide affinity purification.
Conjugation:	Unconjugated
Storage:	Store at -20°C as received.
Stability:	Stable for 12 months from date of receipt.
Predicted Protein Size:	177439 Da
Gene Name:	nestin
Database Link:	NP_006608 Entrez Gene 10763 Human P48681
Synonyms:	Nbla00170
Protein Families:	ES Cell Differentiation/IPS



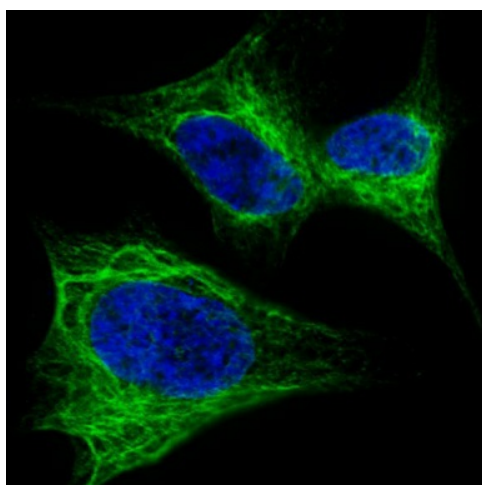
[View online »](#)

Product images:


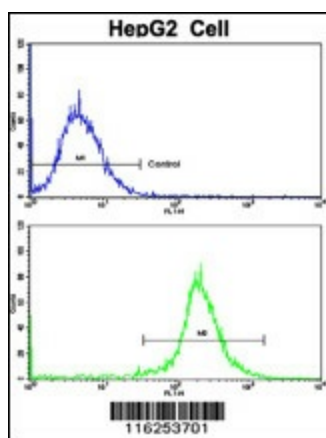
Western blot analysis of Nestin Antibody (S1409) (Cat.#[TA324694]) in HepG2 cell line lysates (35ug/lane). NES (arrow) was detected using the purified Pab.



Formalin-fixed and paraffin-embedded human hepatocarcinoma reacted with Nestin Antibody (S1409), which was peroxidase-conjugated to the secondary antibody, followed by DAB staining. This data demonstrates the use of this antibody for immunohistochemistry; clinical relevance has not been evaluated.



IF image of SY5Y cells stained with Nestin (S1409) antibody. SY5Y cells were incubated with [TA324694] Nestin (S1409) primary antibody (1:200, 2 h at RT). For secondary antibody, Alexa Fluor® 488 conjugated donkey anti-rabbit antibody (green) was used (1:1000, 1h). Nuclei were counterstained with Hoechst 33342 (blue). Note the highly specific localization of the Nestin (S1409) immunosignal to the intermediate filaments.



Flow cytometric analysis of HepG2 cells using Nestin Antibody (S1409) (bottom histogram) compared to a negative control cell (top histogram). FITC-conjugated goat-anti-rabbit secondary antibodies were used for the analysis.