

## Product datasheet for **TA324692**

### ERK2 (MAPK1) Mouse Monoclonal Antibody [Clone ID: 814CT5.4.2]

#### Product data:

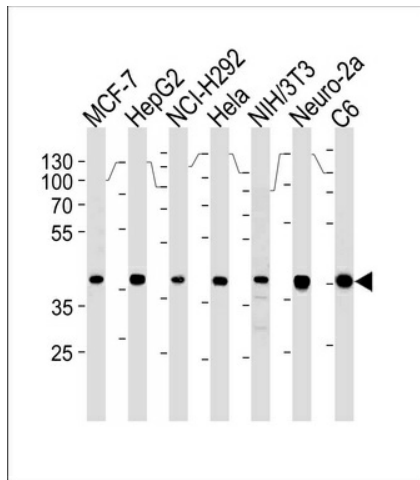
Product Type:	Primary Antibodies
Clone Name:	814CT5.4.2
Applications:	WB
Recommended Dilution:	WB: 1:1000
Reactivity:	Human, Mouse (Predicted: Rat, Bovine, Xenopus)
Host:	Mouse
Isotype:	IgG1, kappa
Clonality:	Monoclonal
Immunogen:	This Erk2 antibody is generated from mice immunized with a KLH conjugated synthetic peptide between 154-183 amino acids from human Erk2.
Formulation:	Purified monoclonal antibody supplied in PBS with 0.09% (W/V) sodium azide.
Concentration:	lot specific
Purification:	This antibody is purified through a protein G column, followed by dialysis against PBS.
Conjugation:	Unconjugated
Storage:	Store at -20°C as received.
Stability:	Stable for 12 months from date of receipt.
Predicted Protein Size:	41390 Da
Gene Name:	mitogen-activated protein kinase 1
Database Link:	<a href="#">NP_002736</a> <a href="#">Entrez Gene 26413 Mouse</a> <a href="#">Entrez Gene 116590 Rat</a> <a href="#">Entrez Gene 5594 Human</a> <a href="#">P28482</a>
Synonyms:	ERK; ERK-2; ERK2; ERT1; MAPK2; p38; p40; p41; p41mapk; p42-MAPK; P42MAPK; PRKM1; PRKM2
Protein Families:	Druggable Genome, Protein Kinase



[View online »](#)

**Protein Pathways:**

Acute myeloid leukemia, Adherens junction, Alzheimer's disease, Axon guidance, B cell receptor signaling pathway, Bladder cancer, Chemokine signaling pathway, Chronic myeloid leukemia, Colorectal cancer, Dorso-ventral axis formation, Endometrial cancer, ErbB signaling pathway, Fc epsilon RI signaling pathway, Fc gamma R-mediated phagocytosis, Focal adhesion, Gap junction, Glioma, GnRH signaling pathway, Insulin signaling pathway, Long-term depression, Long-term potentiation, MAPK signaling pathway, Melanogenesis, Melanoma, mTOR signaling pathway, Natural killer cell mediated cytotoxicity, Neurotrophin signaling pathway, NOD-like receptor signaling pathway, Non-small cell lung cancer, Oocyte meiosis, Pancreatic cancer, Pathways in cancer, Prion diseases, Progesterone-mediated oocyte maturation, Prostate cancer, Regulation of actin cytoskeleton, Renal cell carcinoma, T cell receptor signaling pathway, TGF-beta signaling pathway, Thyroid cancer, Toll-like receptor signaling pathway, Type II diabetes mellitus, Vascular smooth muscle contraction, VEGF signaling pathway

**Product images:**

MAPK1 Antibody (Center) (Cat. #TA324692) western blot analysis in MCF-7, HepG2, NCI-H292, HeLa, mouse NIH/3T3 and Neuro-2a, rat C6 cell line lysates (35ug/lane). This demonstrates the MAPK1 antibody detected the MAPK1 protein (arrow).