

## Product datasheet for **TA324690S**

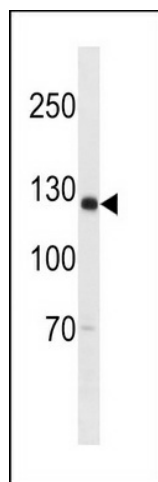
### SGOL2 (SGO2) Rabbit Polyclonal Antibody

#### Product data:

Product Type:	Primary Antibodies
Applications:	WB
Recommended Dilution:	WB: 1:1000
Reactivity:	Human
Host:	Rabbit
Isotype:	IgG
Clonality:	Polyclonal
Immunogen:	This SGOL2 antibody is generated from rabbits immunized with a KLH conjugated synthetic peptide between 391-419 amino acids from the Central region of human SGOL2.
Formulation:	Purified polyclonal antibody supplied in PBS with 0.09% (W/V) sodium azide.
Concentration:	lot specific
Purification:	This antibody is purified through a protein A column, followed by peptide affinity purification.
Conjugation:	Unconjugated
Storage:	Store at -20°C as received.
Stability:	Stable for 12 months from date of receipt.
Predicted Protein Size:	144739 Da
Gene Name:	shugoshin 2
Database Link:	<a href="#">NP_689737</a> <a href="#">Entrez Gene 151246 Human</a> <a href="#">Q562F6</a>
Synonyms:	SGOL2; TRIPIN



[View online »](#)

**Product images:**


SGOL2 Antibody (Center) (Cat. #TA324690])  
western blot analysis in U-937 cell line lysates  
(35ug/lane). This demonstrates the SGOL2  
antibody detected the SGOL2 protein (arrow).