

Product datasheet for **TA324690**

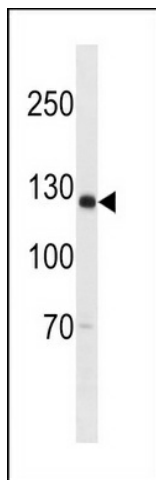
SGOL2 (SGO2) Rabbit Polyclonal Antibody

Product data:

Product Type:	Primary Antibodies
Applications:	WB
Recommended Dilution:	WB: 1:1000
Reactivity:	Human
Host:	Rabbit
Isotype:	IgG
Clonality:	Polyclonal
Immunogen:	This SGOL2 antibody is generated from rabbits immunized with a KLH conjugated synthetic peptide between 391-419 amino acids from the Central region of human SGOL2.
Formulation:	Purified polyclonal antibody supplied in PBS with 0.09% (W/V) sodium azide.
Concentration:	lot specific
Purification:	This antibody is purified through a protein A column, followed by peptide affinity purification.
Conjugation:	Unconjugated
Storage:	Store at -20°C as received.
Stability:	Stable for 12 months from date of receipt.
Predicted Protein Size:	144739 Da
Gene Name:	shugoshin 2
Database Link:	NP_689737 Entrez Gene 151246 Human Q562F6
Synonyms:	SGOL2; TRIPIN



[View online »](#)

Product images:

SGOL2 Antibody (Center) (Cat. #TA324690)
western blot analysis in U-937 cell line lysates
(35ug/lane). This demonstrates the SGOL2
antibody detected the SGOL2 protein (arrow).