

Product datasheet for **TA324689**

Homeo box C10 (HOXC10) Rabbit Polyclonal Antibody

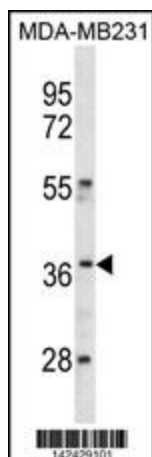
Product data:

Product Type:	Primary Antibodies
Applications:	IF, WB
Recommended Dilution:	IF: 1:10~50, WB: 1:1000
Reactivity:	Human (Predicted: Mouse)
Host:	Rabbit
Isotype:	IgG
Clonality:	Polyclonal
Immunogen:	This HOXC10 antibody is generated from rabbits immunized with a KLH conjugated synthetic peptide between 224-250 amino acids from the C-terminal region of human HOXC10.
Formulation:	Purified polyclonal antibody supplied in PBS with 0.09% (W/V) sodium azide.
Concentration:	lot specific
Purification:	This antibody is purified through a protein A column, followed by peptide affinity purification.
Conjugation:	Unconjugated
Storage:	Store at -20°C as received.
Stability:	Stable for 12 months from date of receipt.
Predicted Protein Size:	38073 Da
Gene Name:	homeobox C10
Database Link:	NP_059105 Entrez Gene 209448 Mouse Entrez Gene 3226 Human Q9NYD6
Synonyms:	HOX3I
Protein Families:	Transcription Factors

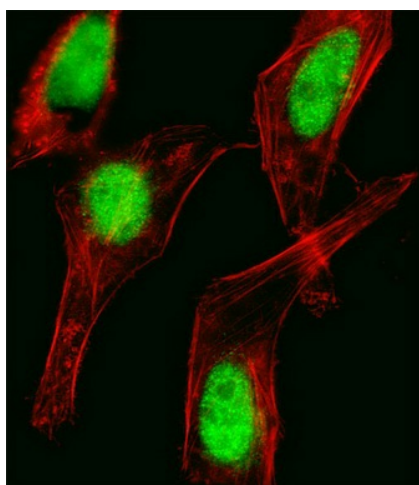


[View online »](#)

Product images:



HOXC10 Antibody (C-term) (Cat. #TA324689) western blot analysis in MDA-MB231 cell line lysates (35ug/lane). This demonstrates the HOXC10 antibody detected the HOXC10 protein (arrow).



IF image of HeLa cell stained with HOXC10 Antibody (C-term) (Cat#TA324689). HeLa cells were incubated with HOXC10 primary antibody (1:25, 1 h at 37°C). For secondary antibody, Alexa Fluor® 488 conjugated donkey anti-rabbit antibody (green) was used (1:400). Cytoplasmic actin was counterstained with Alexa Fluor® 555 (red) conjugated Phalloidin (7 units/ml). HOXC10 immunoreactivity is localized to Nucleus significantly.