

Product datasheet for **TA324688S**

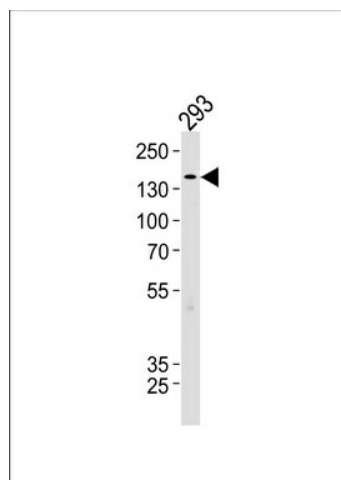
Tuberin (TSC2) Rabbit Polyclonal Antibody

Product data:

Product Type:	Primary Antibodies
Applications:	WB
Recommended Dilution:	WB: 1:1000
Reactivity:	Human
Host:	Rabbit
Isotype:	IgG
Clonality:	Polyclonal
Immunogen:	This TSC2 antibody is generated from rabbits immunized with a KLH conjugated synthetic peptide between 1397-1426 amino acids from the Central region of human TSC2.
Formulation:	Purified polyclonal antibody supplied in PBS with 0.09% (W/V) sodium azide.
Concentration:	lot specific
Purification:	This antibody is purified through a protein A column, followed by peptide affinity purification.
Conjugation:	Unconjugated
Storage:	Store at -20°C as received.
Stability:	Stable for 12 months from date of receipt.
Predicted Protein Size:	200608 Da
Gene Name:	tuberous sclerosis 2
Database Link:	NP_000539 Entrez Gene 7249 Human P49815
Synonyms:	LAM; PPP1R160; TSC4
Protein Families:	Druggable Genome
Protein Pathways:	Insulin signaling pathway, mTOR signaling pathway, p53 signaling pathway



[View online »](#)

Product images:

TSC2 Antibody (Center S1418/S1420) (Cat. # [TA324688]) western blot analysis in 293 cell line lysates (35ug/lane). This demonstrates the TSC2 antibody detected the TSC2 protein (arrow).