

Product datasheet for **TA324687S**

Cyclin D1 (CCND1) Rabbit Polyclonal Antibody

Product data:

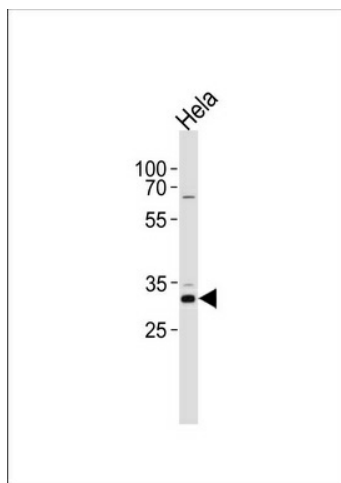
Product Type:	Primary Antibodies
Applications:	WB
Recommended Dilution:	WB: 1:1000
Reactivity:	Human
Host:	Rabbit
Isotype:	IgG
Clonality:	Polyclonal
Immunogen:	This CCND1 antibody is generated from rabbits immunized with a KLH conjugated synthetic peptide between 267-294 amino acids from the C-terminal region of human CCND1.
Formulation:	Purified polyclonal antibody supplied in PBS with 0.09% (W/V) sodium azide.
Concentration:	lot specific
Purification:	This antibody is purified through a protein A column, followed by peptide affinity purification.
Conjugation:	Unconjugated
Storage:	Store at -20°C as received.
Stability:	Stable for 12 months from date of receipt.
Predicted Protein Size:	33729 Da
Gene Name:	cyclin D1
Database Link:	NP_444284 Entrez Gene 595 Human P24385
Synonyms:	BCL1; D11S287E; PRAD1; U21B31
Protein Families:	Druggable Genome, Stem cell - Pluripotency, Stem cell relevant signaling - DSL/Notch pathway, Stem cell relevant signaling - JAK/STAT signaling pathway, Stem cell relevant signaling - Wnt Signaling pathway



[View online »](#)

Protein Pathways:

Acute myeloid leukemia, Bladder cancer, Cell cycle, Chronic myeloid leukemia, Colorectal cancer, Endometrial cancer, Focal adhesion, Glioma, Jak-STAT signaling pathway, Melanoma, Non-small cell lung cancer, p53 signaling pathway, Pancreatic cancer, Pathways in cancer, Prostate cancer, Small cell lung cancer, Thyroid cancer, Viral myocarditis, Wnt signaling pathway

Product images:

CCND1 Antibody (T288) (Cat. #[TA324687])
western blot analysis in HeLa cell line lysates
(35ug/lane). This demonstrates the CCND1
antibody detected the CCND1 protein (arrow).