

## Product datasheet for **TA324686**

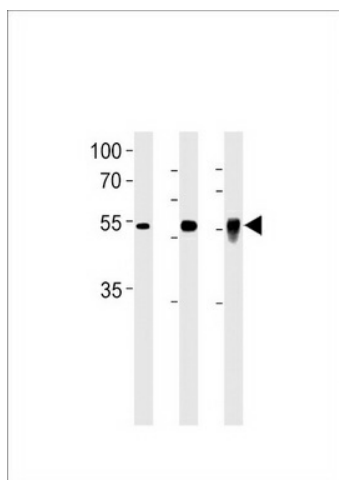
### DMRTA2 Rabbit Polyclonal Antibody

#### Product data:

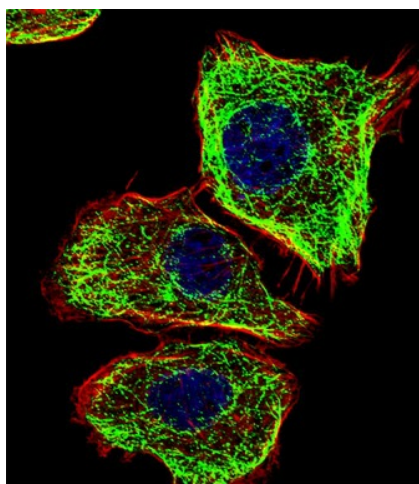
Product Type:	Primary Antibodies
Applications:	IF, WB
Recommended Dilution:	WB: 1:1000, IF: 1:10~50
Reactivity:	Human, Mouse, Zebrafish (Predicted: Bovine)
Host:	Rabbit
Isotype:	IgG
Clonality:	Polyclonal
Immunogen:	This DMRTA2 antibody is generated from rabbits immunized with a KLH conjugated synthetic peptide between 487-515 amino acids from the C-terminal region of human DMRTA2.
Formulation:	Purified polyclonal antibody supplied in PBS with 0.09% (W/V) sodium azide.
Concentration:	lot specific
Purification:	This antibody is purified through a protein A column, followed by peptide affinity purification.
Conjugation:	Unconjugated
Storage:	Store at -20°C as received.
Stability:	Stable for 12 months from date of receipt.
Predicted Protein Size:	53356 Da
Gene Name:	DMRT like family A2
Database Link:	<a href="#">NP_115486</a> <a href="#">Entrez Gene 242620 Mouse</a> <a href="#">Entrez Gene 63950 Human</a> <a href="#">Q96SC8</a>
Synonyms:	DMRT-like family A2



[View online »](#)

**Product images:**

DMRTA2 Antibody (C-term) (Cat. #TA324686) western blot analysis in PC-3 cell line, mouse testis and zebra fish brain tissue lysates (35ug/lane). This demonstrates the DMRTA2 antibody detected the DMRTA2 protein (arrow).



IF image of U251 cell stained with DMRTA2 Antibody (C-term) (Cat#TA324686). U251 cells were incubated with DMRTA2 primary antibody (1:25, 1 h at 37°C). For secondary antibody, Alexa Fluor® 488 conjugated donkey anti-rabbit antibody (green) was used (1:400). Cytoplasmic actin was counterstained with Alexa Fluor® 555 (red) conjugated Phalloidin (7 units/ml). Nuclei were counterstained with DAPI (blue). DMRTA2 immunoreactivity is localized to microtubules significantly.