

Product datasheet for **TA324685**

YB1 (YBX1) Rabbit Polyclonal Antibody

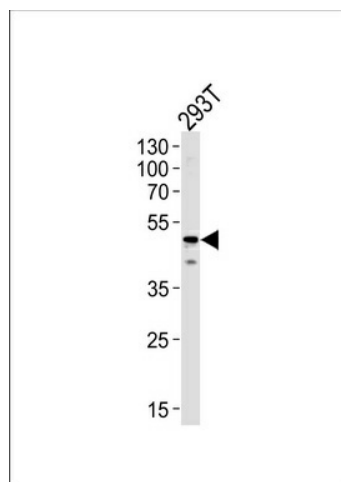
Product data:

Product Type:	Primary Antibodies
Applications:	IF, WB
Recommended Dilution:	WB: 1:1000, IF: 1:10~50
Reactivity:	Human (Predicted: Mouse, Rat, Bovine, Rabbit)
Host:	Rabbit
Isotype:	IgG
Clonality:	Polyclonal
Immunogen:	This YBX1 antibody is generated from rabbits immunized with a KLH conjugated synthetic peptide between 149-178 amino acids from the Central region of human YBX1.
Formulation:	Purified polyclonal antibody supplied in PBS with 0.09% (W/V) sodium azide.
Concentration:	lot specific
Purification:	This antibody is purified through a protein A column, followed by peptide affinity purification.
Conjugation:	Unconjugated
Storage:	Store at -20°C as received.
Stability:	Stable for 12 months from date of receipt.
Predicted Protein Size:	35924 Da
Gene Name:	Y-box binding protein 1
Database Link:	NP_004550 Entrez Gene 22608 Mouse Entrez Gene 500538 Rat Entrez Gene 4904 Human P67809
Synonyms:	BP-8; CSDA2; CSDB; DBPB; MDR-NF1; NSEP-1; NSEP1; YB-1; YB1
Protein Families:	ES Cell Differentiation/IPS, Transcription Factors

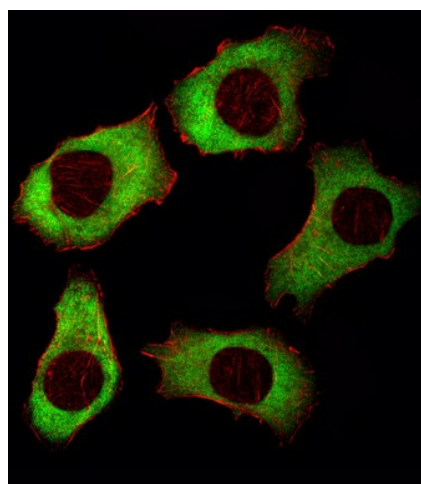


[View online »](#)

Product images:



YBX1 Antibody (Center) (Cat.# TA324685) western blot analysis in 293T cell line lysates (35ug/lane). This demonstrates the YBX1 antibody detected the YBX1 protein (arrow).



IF image of A549 cell stained with YBX1 Antibody (Center) (Cat#TA324685/SA120807BH). A549 cells were incubated with YBX1 primary antibody (1:25, 1 h at 37°C). For secondary antibody, Alexa Fluor® 488 conjugated donkey anti-rabbit antibody (green) was used (1:400). Cytoplasmic actin was counterstained with Alexa Fluor® 555 (red) conjugated Phalloidin (7 units/ml). YBX1 immunoreactivity is localized to Cytoplasm significantly.