

## Product datasheet for **TA324684S**

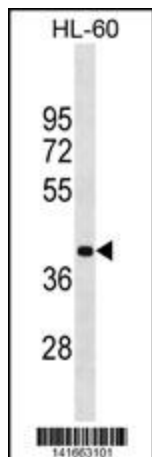
### MBD2 Rabbit Polyclonal Antibody

#### Product data:

Product Type:	Primary Antibodies
Applications:	IF, WB
Recommended Dilution:	IF: 1:10~50, WB: 1:1000
Reactivity:	Human (Predicted: Mouse)
Host:	Rabbit
Isotype:	IgG
Clonality:	Polyclonal
Immunogen:	This MBD2 antibody is generated from rabbits immunized with a KLH conjugated synthetic peptide between 250-279 amino acids from the Central region of human MBD2.
Formulation:	Purified polyclonal antibody supplied in PBS with 0.09% (W/V) sodium azide.
Concentration:	lot specific
Purification:	This antibody is purified through a protein A column, followed by peptide affinity purification.
Conjugation:	Unconjugated
Storage:	Store at -20°C as received.
Stability:	Stable for 12 months from date of receipt.
Predicted Protein Size:	43255 Da
Gene Name:	methyl-CpG binding domain protein 2
Database Link:	<a href="#">NP_003918</a> <a href="#">Entrez Gene 17191 Mouse</a> <a href="#">Entrez Gene 8932 Human</a> <a href="#">Q9UBB5</a>
Synonyms:	DMTase; NY-CO-41
Protein Families:	Druggable Genome, Stem cell - Pluripotency, Transcription Factors



[View online »](#)

**Product images:**

MBD2 Antibody (Center) (Cat. #[TA324684]) western blot analysis in HL-60 cell line lysates (35ug/lane). This demonstrates the MBD2 antibody detected the MBD2 protein (arrow).



IF image of HeLa cell stained with MBD2 Antibody (Center) (Cat#[TA324684]). HeLa cells were incubated with MBD2 primary antibody (1:25, 1 h at 37°C). For secondary antibody, Alexa Fluor® 488 conjugated donkey anti-rabbit antibody (green) was used (1:400). Cytoplasmic actin was counterstained with Alexa Fluor® 555 (red) conjugated Phalloidin (7 units/ml). Nuclei were counterstained with DAPI (blue). MBD2 immunoreactivity is localized to Nucleus significantly.