

Product datasheet for **TA324683S**

c-Jun (JUN) Rabbit Polyclonal Antibody

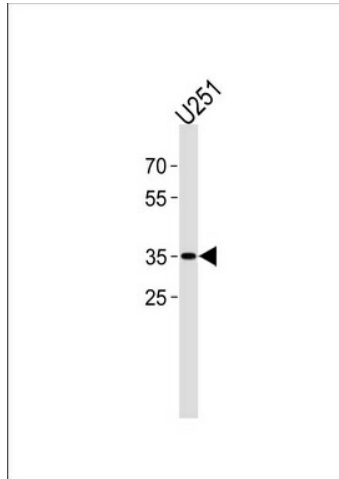
Product data:

Product Type:	Primary Antibodies
Applications:	FC, IHC, WB
Recommended Dilution:	WB: 1:1000, IHC: 1:50~100, FC: 1:10~50
Reactivity:	Human (Predicted: Mouse, Rat, Bovine, Chicken, Pig)
Host:	Rabbit
Isotype:	IgG
Clonality:	Polyclonal
Immunogen:	This JUN antibody is generated from rabbits immunized with a KLH conjugated synthetic peptide between 222-251 amino acids from the C-terminal region of human JUN.
Formulation:	Purified polyclonal antibody supplied in PBS with 0.09% (W/V) sodium azide.
Concentration:	lot specific
Purification:	This antibody is purified through a protein A column, followed by peptide affinity purification.
Conjugation:	Unconjugated
Storage:	Store at -20°C as received.
Stability:	Stable for 12 months from date of receipt.
Predicted Protein Size:	35676 Da
Gene Name:	Jun proto-oncogene, AP-1 transcription factor subunit
Database Link:	NP_002219 Entrez Gene 16476 MouseEntrez Gene 24516 RatEntrez Gene 3725 Human P05412
Synonyms:	AP-1; AP1; c-Jun
Protein Families:	Druggable Genome, ES Cell Differentiation/IPS, Transcription Factors
Protein Pathways:	B cell receptor signaling pathway, Colorectal cancer, Epithelial cell signaling in Helicobacter pylori infection, ErbB signaling pathway, Focal adhesion, GnRH signaling pathway, MAPK signaling pathway, Neurotrophin signaling pathway, Pathways in cancer, Renal cell carcinoma, T cell receptor signaling pathway, Toll-like receptor signaling pathway, Wnt signaling pathway

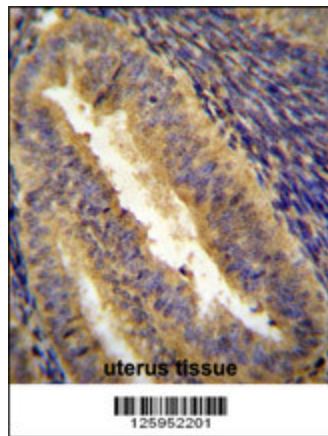


[View online »](#)

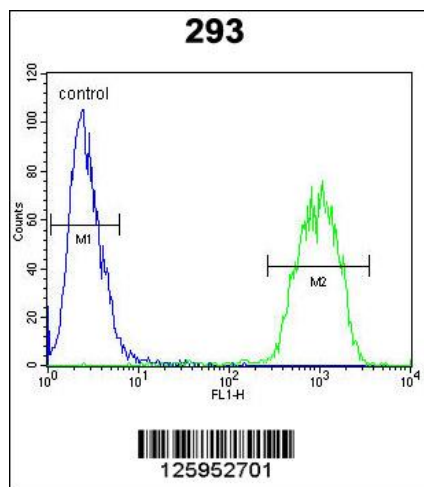
Product images:



JUN Antibody (C-term) (Cat. #[TA324683]) western blot analysis in U251 cell line lysates (35ug/lane). This demonstrates the JUN antibody detected the JUN protein (arrow).



JUN Antibody (C-term) (Cat. #[TA324683]) immunohistochemistry analysis in formalin fixed and paraffin embedded human uterus tissue followed by peroxidase conjugation of the secondary antibody and DAB staining. This data demonstrates the use of JUN Antibody (C-term) for immunohistochemistry. Clinical relevance has not been evaluated.



JUN Antibody (C-term) (Cat. #[TA324683]) flow cytometric analysis of 293 cells (right histogram) compared to a negative control cell (left histogram). FITC-conjugated goat-anti-rabbit secondary antibodies were used for the analysis.