

## Product datasheet for **TA324682**

### STAT1 Rabbit Polyclonal Antibody

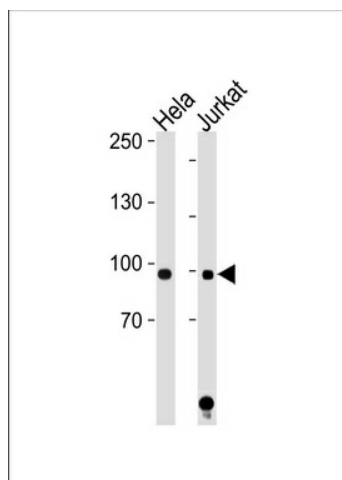
#### Product data:

Product Type:	Primary Antibodies
Applications:	WB
Recommended Dilution:	WB: 1:1000
Reactivity:	Human
Host:	Rabbit
Isotype:	IgG
Clonality:	Polyclonal
Immunogen:	This STAT1 antibody is generated from rabbits immunized with a KLH conjugated synthetic peptide between 717-745 amino acids from the C-terminal region of human STAT1.
Formulation:	Purified polyclonal antibody supplied in PBS with 0.09% (W/V) sodium azide.
Concentration:	lot specific
Purification:	This antibody is purified through a protein A column, followed by peptide affinity purification.
Conjugation:	Unconjugated
Storage:	Store at -20°C as received.
Stability:	Stable for 12 months from date of receipt.
Predicted Protein Size:	87335 Da
Gene Name:	signal transducer and activator of transcription 1
Database Link:	<a href="#">NP_009330</a> <a href="#">Entrez Gene 6772 Human</a> <a href="#">P42224</a>
Synonyms:	CANDF7; IMD31A; IMD31B; IMD31C; ISGF-3; STAT91
Protein Families:	Druggable Genome, Transcription Factors
Protein Pathways:	Chemokine signaling pathway, Jak-STAT signaling pathway, Pancreatic cancer, Pathways in cancer, Toll-like receptor signaling pathway



[View online »](#)

## Product images:



STAT1 Antibody (C-term) (Cat. #TA324682) western blot analysis in HeLa, Jurkat cell line lysates (35ug/lane). This demonstrates the STAT1 antibody detected the STAT1 protein (arrow).