

Product datasheet for **TA324681S**

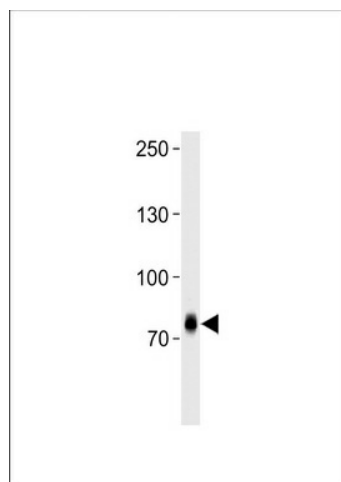
Zfp219 (ZNF219) Rabbit Polyclonal Antibody

Product data:

Product Type:	Primary Antibodies
Applications:	WB
Recommended Dilution:	WB: 1:1000
Reactivity:	Human
Host:	Rabbit
Isotype:	IgG
Clonality:	Polyclonal
Immunogen:	This ZNF219 antibody is generated from rabbits immunized with a KLH conjugated synthetic peptide between 653-682 amino acids from the C-terminal region of human ZNF219.
Formulation:	Purified polyclonal antibody supplied in PBS with 0.09% (W/V) sodium azide.
Concentration:	lot specific
Purification:	This antibody is prepared by Saturated Ammonium Sulfate (SAS) precipitation followed by dialysis against PBS.
Conjugation:	Unconjugated
Storage:	Store at -20°C as received.
Stability:	Stable for 12 months from date of receipt.
Predicted Protein Size:	76877 Da
Gene Name:	zinc finger protein 219
Database Link:	NP_001095142 Entrez Gene 51222 Human Q9P2Y4
Synonyms:	ZFP219
Protein Families:	Transcription Factors



[View online »](#)

Product images:


ZNF219 Antibody (C-term) (Cat. #TA324681S)
western blot analysis in CEM cell line lysates
(35ug/lane). This demonstrates the ZNF219
antibody detected the ZNF219 protein (arrow).