

## Product datasheet for **TA324680**

### NF-kB p65 (RELA) Rabbit Polyclonal Antibody

#### Product data:

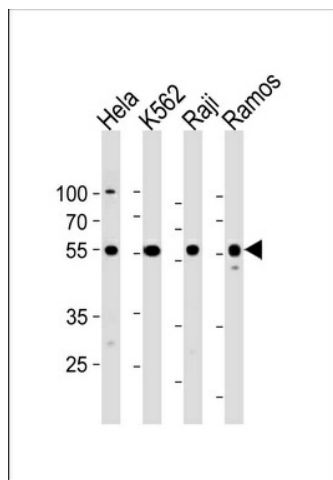
Product Type:	Primary Antibodies
Applications:	IF, WB
Recommended Dilution:	IF: 1:10~50, WB: 1:1000
Reactivity:	Human (Predicted: Mouse)
Host:	Rabbit
Isotype:	IgG
Clonality:	Polyclonal
Immunogen:	This RELA antibody is generated from rabbits immunized with a KLH conjugated synthetic peptide between 166-195 amino acids from the Central region of human RELA.
Formulation:	Purified polyclonal antibody supplied in PBS with 0.09% (W/V) sodium azide.
Concentration:	lot specific
Purification:	This antibody is purified through a protein A column, followed by peptide affinity purification.
Conjugation:	Unconjugated
Storage:	Store at -20°C as received.
Stability:	Stable for 12 months from date of receipt.
Predicted Protein Size:	60219 Da
Gene Name:	RELA proto-oncogene, NF-kB subunit
Database Link:	<a href="#">NP_068810</a> <a href="#">Entrez Gene 19697 Mouse</a> <a href="#">Entrez Gene 5970 Human</a> <a href="#">Q04206</a>
Synonyms:	NFKB3; p65
Protein Families:	Druggable Genome, Transcription Factors



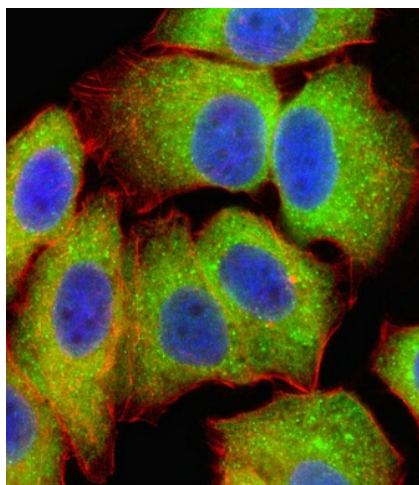
[View online »](#)

**Protein Pathways:**

Acute myeloid leukemia, Adipocytokine signaling pathway, Apoptosis, B cell receptor signaling pathway, Chemokine signaling pathway, Chronic myeloid leukemia, Cytosolic DNA-sensing pathway, Epithelial cell signaling in Helicobacter pylori infection, MAPK signaling pathway, Neurotrophin signaling pathway, NOD-like receptor signaling pathway, Pancreatic cancer, Pathways in cancer, Prostate cancer, RIG-I-like receptor signaling pathway, Small cell lung cancer, T cell receptor signaling pathway, Toll-like receptor signaling pathway

**Product images:**

RELA Antibody (Center) (Cat. #TA324680) western blot analysis in HeLa, K562, Raji, Ramos cell line lysates (35ug/lane). This demonstrates the RELA antibody detected the RELA protein (arrow).



IF image of U251 cell stained with RELA Antibody (Center) (Cat#TA324680). U251 cells were incubated with RELA primary antibody (1:25, 1 h at 37°C). For secondary antibody, Alexa Fluor® 488 conjugated donkey anti-rabbit antibody (green) was used (1:400). Cytoplasmic actin was counterstained with Alexa Fluor® 555 (red) conjugated Phalloidin (7 units/ml). Nuclei were counterstained with DAPI (blue). RELA immunoreactivity is localized to Cytoplasm significantly.