

Product datasheet for **TA324679**

HIP2 (UBE2K) Rabbit Polyclonal Antibody

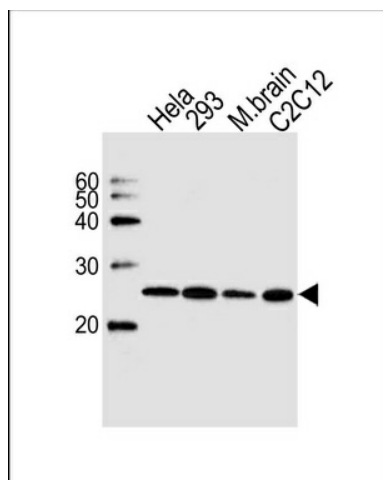
Product data:

Product Type:	Primary Antibodies
Applications:	WB
Recommended Dilution:	WB: 1:1000
Reactivity:	Human, Mouse (Predicted: Bovine)
Host:	Rabbit
Isotype:	IgG
Clonality:	Polyclonal
Immunogen:	This UBE2K antibody is generated from rabbits immunized with a KLH conjugated synthetic peptide between 2-30 amino acids from the N-terminal region of human UBE2K.
Formulation:	Purified polyclonal antibody supplied in PBS with 0.09% (W/V) sodium azide.
Concentration:	lot specific
Purification:	This antibody is purified through a protein A column, followed by peptide affinity purification.
Conjugation:	Unconjugated
Storage:	Store at -20°C as received.
Stability:	Stable for 12 months from date of receipt.
Predicted Protein Size:	22407 Da
Gene Name:	ubiquitin conjugating enzyme E2 K
Database Link:	NP_005330 Entrez Gene 53323 Mouse Entrez Gene 3093 Human P61086
Synonyms:	E2-25K; HIP2; HYPG; LIG; UBC1
Protein Families:	Druggable Genome, Transcription Factors
Protein Pathways:	Ubiquitin mediated proteolysis



[View online »](#)

Product images:



Western blot analysis of lysates from HeLa, 293 cell line, mouse brain tissue lysate, C2C12 cell line (from left to right), using UBE2K Antibody (N-term) (Cat. #TA324679). TA324679 was diluted at 1:1000 at each lane. A goat anti-rabbit IgG H&L (HRP) at 1:5000 dilution was used as the secondary antibody. Lysates at 35ug per lane.