

Product datasheet for **TA324678**

HDAC1 Rabbit Polyclonal Antibody

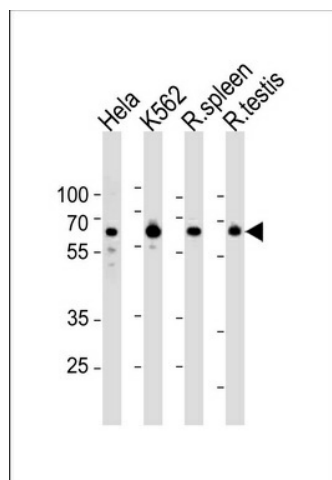
Product data:

Product Type:	Primary Antibodies
Applications:	WB
Recommended Dilution:	WB: 1:1000
Reactivity:	Human, Rat (Predicted: Mouse, Bovine)
Host:	Rabbit
Isotype:	IgG
Clonality:	Polyclonal
Immunogen:	This HDAC1 antibody is generated from rabbits immunized with a KLH conjugated synthetic peptide between 421-450 amino acids from the C-terminal region of human HDAC1.
Formulation:	Purified polyclonal antibody supplied in PBS with 0.09% (W/V) sodium azide.
Concentration:	lot specific
Purification:	This antibody is purified through a protein A column, followed by peptide affinity purification.
Conjugation:	Unconjugated
Storage:	Store at -20°C as received.
Stability:	Stable for 12 months from date of receipt.
Predicted Protein Size:	55103 Da
Gene Name:	histone deacetylase 1
Database Link:	NP_004955 Entrez Gene 297893 RatEntrez Gene 433759 MouseEntrez Gene 3065 Human Q13547
Synonyms:	GON-10; HD1; RPD3; RPD3L1
Protein Families:	Adult stem cells, Druggable Genome, Stem cell - Pluripotency, Stem cell relevant signaling - DSL/Notch pathway, Transcription Factors
Protein Pathways:	Cell cycle, Chronic myeloid leukemia, Huntington's disease, Notch signaling pathway, Pathways in cancer



[View online »](#)

Product images:



HDAC1 Antibody (C-term) (Cat. #TA324678) western blot analysis in HeLa, K562 cell line and rat spleen and testis tissue lysates (35ug/lane). This demonstrates the HDAC1 antibody detected the HDAC1 protein (arrow).