

Product datasheet for **TA324675S**

Estrogen Receptor 1 (ESR1) Rabbit Polyclonal Antibody

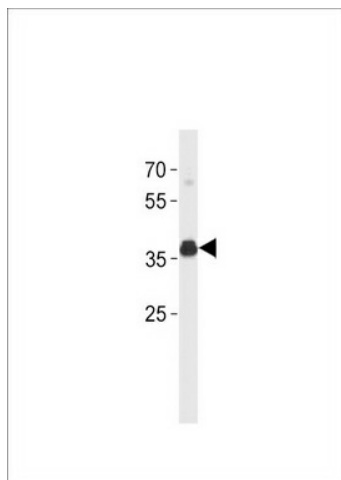
Product data:

Product Type:	Primary Antibodies
Applications:	WB
Recommended Dilution:	WB: 1:1000
Reactivity:	Human
Host:	Rabbit
Isotype:	IgG
Clonality:	Polyclonal
Immunogen:	This ESR1 isoform4 antibody is generated from rabbits immunized with a KLH conjugated synthetic peptide between 283-312 amino acids from the C-terminal region of human ESR1 isoform4.
Formulation:	Purified polyclonal antibody supplied in PBS with 0.09% (W/V) sodium azide.
Concentration:	lot specific
Purification:	This antibody is purified through a protein A column, followed by peptide affinity purification.
Conjugation:	Unconjugated
Storage:	Store at -20°C as received.
Stability:	Stable for 12 months from date of receipt.
Predicted Protein Size:	66216 Da
Gene Name:	estrogen receptor 1
Database Link:	NP_000116 Entrez Gene 2099 Human P03372
Synonyms:	ER; Era; ESR; ESRA; ESTRR; NR3A1
Protein Families:	Druggable Genome, Nuclear Hormone Receptor, Transcription Factors



[View online »](#)

Product images:



ESR1 isoform4 Antibody (C-term) (Cat. # [TA324675]) western blot analysis in SK-BR-3 cell line lysates (35ug/lane). This demonstrates the ESR1 antibody detected the ESR1 protein (arrow).