

Product datasheet for **TA324673**

Estrogen Receptor 1 (ESR1) Rabbit Polyclonal Antibody

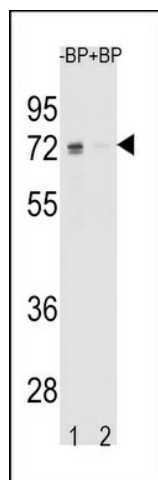
Product data:

Product Type:	Primary Antibodies
Applications:	IF, WB
Recommended Dilution:	WB: 1:1000, IF: 1:10~50
Reactivity:	Human (Predicted: Mouse, Rat, Pig)
Host:	Rabbit
Isotype:	IgG
Clonality:	Polyclonal
Immunogen:	This ESR1 isoform1 antibody is generated from rabbits immunized with a KLH conjugated synthetic peptide between 452-480 amino acids from the C-terminal region of human ESR1 isoform1.
Formulation:	Purified polyclonal antibody supplied in PBS with 0.09% (W/V) sodium azide.
Concentration:	lot specific
Purification:	This antibody is purified through a protein A column, followed by peptide affinity purification.
Conjugation:	Unconjugated
Storage:	Store at -20°C as received.
Stability:	Stable for 12 months from date of receipt.
Predicted Protein Size:	66216 Da
Gene Name:	estrogen receptor 1
Database Link:	NP_000116 Entrez Gene 13982 Mouse Entrez Gene 24890 Rat Entrez Gene 2099 Human P03372
Synonyms:	ER; Era; ESR; ESRA; ESTRR; NR3A1
Protein Families:	Druggable Genome, Nuclear Hormone Receptor, Transcription Factors

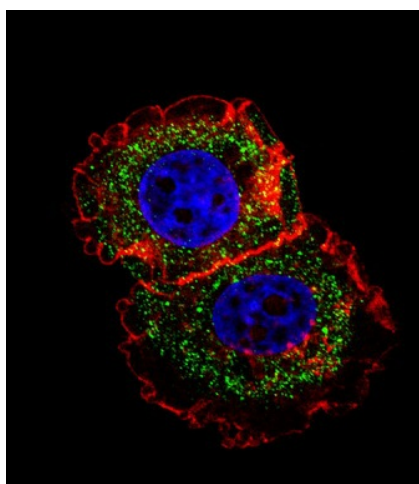


[View online »](#)

Product images:



Western blot analysis of ESR1 isoform1 Antibody (C-term) Pab (Cat. #TA324673) pre-incubated without (lane 1) and with (lane 2) blocking peptide in K562 cell line lysate. ESR1 isoform1 Antibody (C-term) was detected using the purified Pab.



IF image of MCF-7 cell stained with ESR1 isoform1 Antibody (C-term) (Cat#TA324673). MCF-7 cells were incubated with ESR1 isoform1 primary antibody (1:25, 1 h at 37°C). For secondary antibody, Alexa Fluor® 488 conjugated donkey anti-rabbit antibody (green) was used (1:400). Cytoplasmic actin was counterstained with Alexa Fluor® 555 (red) conjugated Phalloidin (7 units/ml). Nuclei were counterstained with DAPI (blue). ESR1 isoform1 immunoreactivity is localized to cytoplasm significantly.