

## Product datasheet for **TA324671S**

### Estrogen Receptor beta (ESR2) Rabbit Polyclonal Antibody

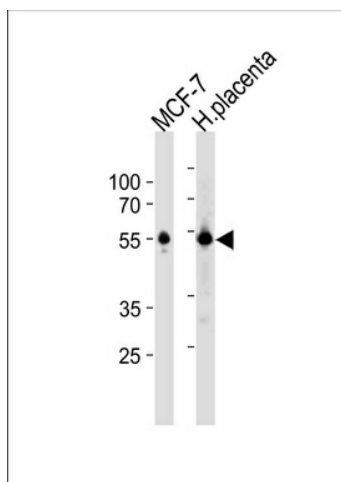
#### Product data:

|                         |  |
|-------------------------|--|
| Product Type:           | Primary Antibodies   |
| Applications:           | WB   |
| Recommended Dilution:   | WB: 1:1000   |
| Reactivity:             | Human (Predicted: Bovine)  |
| Host:                   | Rabbit   |
| Isotype:                | IgG  |
| Clonality:              | Polyclonal   |
| Immunogen:              | This ESR2 antibody is generated from rabbits immunized with a KLH conjugated synthetic peptide between 451-480 amino acids from the C-terminal region of human ESR2. |
| Formulation:            | Purified polyclonal antibody supplied in PBS with 0.09% (W/V) sodium azide.  |
| Concentration:          | lot specific   |
| Purification:           | This antibody is purified through a protein A column, followed by peptide affinity purification.   |
| Conjugation:            | Unconjugated   |
| Storage:                | Store at -20°C as received.  |
| Stability:              | Stable for 12 months from date of receipt.   |
| Predicted Protein Size: | 59216 Da   |
| Gene Name:              | estrogen receptor 2  |
| Database Link:          | <a href="#">NP_001035365</a><br><a href="#">Entrez Gene 2100 Human</a><br><a href="#">Q92731</a>   |
| Synonyms:               | ER-BETA; Erb; ESR-BETA; ESRB; ESTRB; NR3A2   |
| Protein Families:       | Druggable Genome, Nuclear Hormone Receptor, Transcription Factors  |



[View online »](#)

## Product images:



ESR2 Antibody (C-term) (Cat. #[TA324671])  
western blot analysis in MCF-7 cell line and  
human placenta tissue lysates (35ug/lane). This  
demonstrates the ESR2 antibody detected the  
ESR2 protein (arrow).