

Product datasheet for **TA324671**

Estrogen Receptor beta (ESR2) Rabbit Polyclonal Antibody

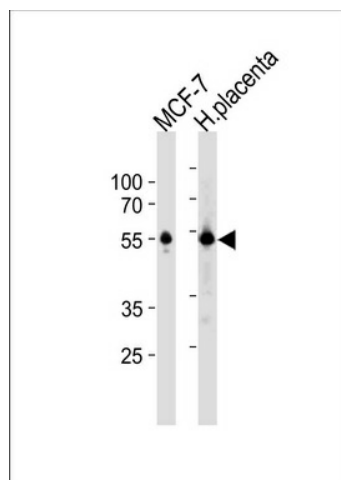
Product data:

Product Type:	Primary Antibodies
Applications:	WB
Recommended Dilution:	WB: 1:1000
Reactivity:	Human (Predicted: Bovine)
Host:	Rabbit
Isotype:	IgG
Clonality:	Polyclonal
Immunogen:	This ESR2 antibody is generated from rabbits immunized with a KLH conjugated synthetic peptide between 451-480 amino acids from the C-terminal region of human ESR2.
Formulation:	Purified polyclonal antibody supplied in PBS with 0.09% (W/V) sodium azide.
Concentration:	lot specific
Purification:	This antibody is purified through a protein A column, followed by peptide affinity purification.
Conjugation:	Unconjugated
Storage:	Store at -20°C as received.
Stability:	Stable for 12 months from date of receipt.
Predicted Protein Size:	59216 Da
Gene Name:	estrogen receptor 2
Database Link:	NP_001035365 Entrez Gene 2100 Human Q92731
Synonyms:	ER-BETA; Erb; ESR-BETA; ESRB; ESTRB; NR3A2
Protein Families:	Druggable Genome, Nuclear Hormone Receptor, Transcription Factors



[View online »](#)

Product images:



ESR2 Antibody (C-term) (Cat. #TA324671) western blot analysis in MCF-7 cell line and human placenta tissue lysates (35ug/lane). This demonstrates the ESR2 antibody detected the ESR2 protein (arrow).