

Product datasheet for **TA324670S**

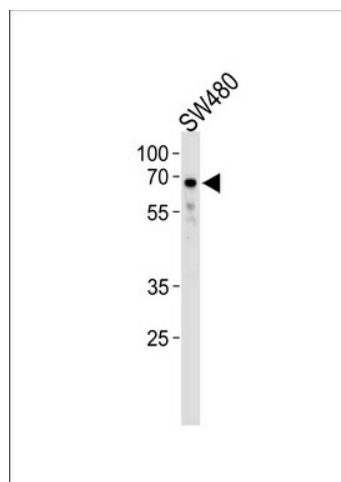
TRIM29 Rabbit Polyclonal Antibody

Product data:

Product Type:	Primary Antibodies
Applications:	WB
Recommended Dilution:	WB: 1:1000
Reactivity:	Human (Predicted: Mouse)
Host:	Rabbit
Isotype:	IgG
Clonality:	Polyclonal
Immunogen:	This TRIM29 antibody is generated from rabbits immunized with a KLH conjugated synthetic peptide between 336-365 amino acids from the Central region of human TRIM29.
Formulation:	Purified polyclonal antibody supplied in PBS with 0.09% (W/V) sodium azide.
Concentration:	lot specific
Purification:	This antibody is purified through a protein A column, followed by peptide affinity purification.
Conjugation:	Unconjugated
Storage:	Store at -20°C as received.
Stability:	Stable for 12 months from date of receipt.
Predicted Protein Size:	65835 Da
Gene Name:	tripartite motif containing 29
Database Link:	NP_036233 Entrez Gene 72169 Mouse Entrez Gene 23650 Human Q14134
Synonyms:	ATDC
Protein Families:	Transcription Factors



[View online »](#)

Product images:


TRIM29 Antibody (Center) (Cat. #[TA324670])
western blot analysis in SW480 cell line lysates
(35ug/lane). This demonstrates the TRIM29
antibody detected the TRIM29 protein (arrow).