

## Product datasheet for **TA324669S**

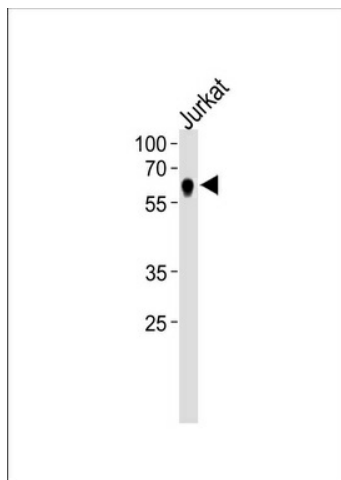
### NR2C2 Rabbit Polyclonal Antibody

#### Product data:

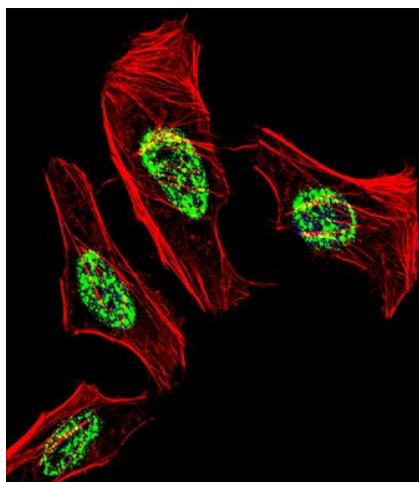
Product Type:	Primary Antibodies
Applications:	IF, WB
Recommended Dilution:	WB: 1:1000, IF: 1:10~50
Reactivity:	Human (Predicted: Mouse, Rat)
Host:	Rabbit
Isotype:	IgG
Clonality:	Polyclonal
Immunogen:	This NR2C2 antibody is generated from rabbits immunized with a KLH conjugated synthetic peptide between 438-466 amino acids from the C-terminal region of human NR2C2.
Formulation:	Purified polyclonal antibody supplied in PBS with 0.09% (W/V) sodium azide.
Concentration:	lot specific
Purification:	This antibody is purified through a protein A column, followed by peptide affinity purification.
Conjugation:	Unconjugated
Storage:	Store at -20°C as received.
Stability:	Stable for 12 months from date of receipt.
Predicted Protein Size:	65414 Da
Gene Name:	nuclear receptor subfamily 2 group C member 2
Database Link:	<a href="#">NP_003289</a> <a href="#">Entrez Gene 22026 Mouse</a> <a href="#">Entrez Gene 50659 Rat</a> <a href="#">Entrez Gene 7182 Human</a> <a href="#">P49116</a>
Synonyms:	TAK1; TR4
Protein Families:	Druggable Genome, Nuclear Hormone Receptor, Transcription Factors

[View online »](#)

## Product images:



NR2C2 Antibody (C-term) (Cat. #[TA324669]) western blot analysis in Jurkat cell line lysates (35ug/lane). This demonstrates the NR2C2 antibody detected the NR2C2 protein (arrow).



IF image of HeLa cell stained with NR2C2 Antibody (C-term) (Cat#[TA324669]). HeLa cells were incubated with NR2C2 primary antibody (1:25, 1 h at 37°C). For secondary antibody, Alexa Fluor® 488 conjugated donkey anti-rabbit antibody (green) was used (1:400). Cytoplasmic actin was counterstained with Alexa Fluor® 555 (red) conjugated Phalloidin (7 units/ml). Nuclei were counterstained with DAPI (blue). NR2C2 immunoreactivity is localized to Nucleus significantly.