

## Product datasheet for **TA324668S**

### MSX1 Rabbit Polyclonal Antibody

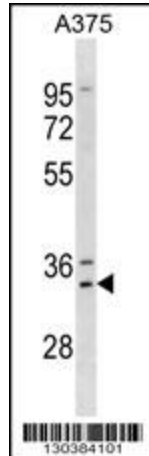
#### Product data:

Product Type:	Primary Antibodies
Applications:	IF, WB
Recommended Dilution:	IF: 1:200, WB: 1:1000
Reactivity:	Human, Mouse (Predicted: Bovine)
Host:	Rabbit
Isotype:	IgG
Clonality:	Polyclonal
Immunogen:	This MSX1 antibody is generated from rabbits immunized with a KLH conjugated synthetic peptide between 111-138 amino acids from the Central region of human MSX1.
Formulation:	Purified polyclonal antibody supplied in PBS with 0.09% (W/V) sodium azide.
Concentration:	lot specific
Purification:	This antibody is purified through a protein A column, followed by peptide affinity purification.
Conjugation:	Unconjugated
Storage:	Store at -20°C as received.
Stability:	Stable for 12 months from date of receipt.
Predicted Protein Size:	30940 Da
Gene Name:	msh homeobox 1
Database Link:	<a href="#">NP_002439</a> <a href="#">Entrez Gene 17701 Mouse</a> <a href="#">Entrez Gene 4487 Human</a> <a href="#">P28360</a>
Synonyms:	ECTD3; HOX7; HYD1; STHAG1
Protein Families:	Druggable Genome, Transcription Factors

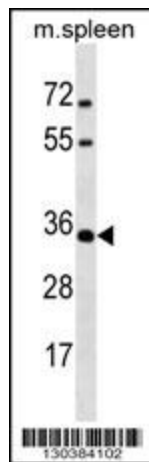


[View online »](#)

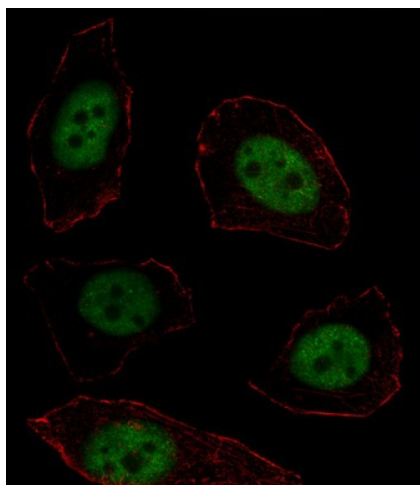
## Product images:



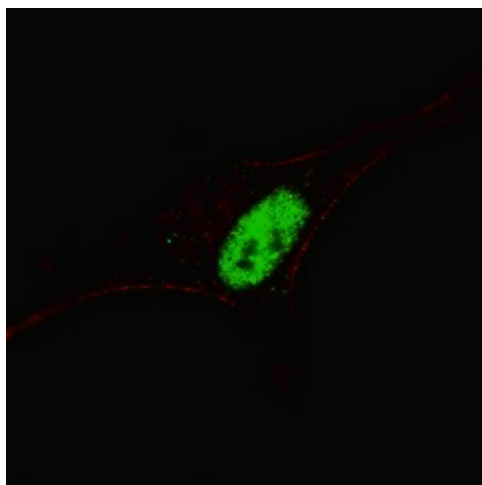
MSX1 Antibody (Center) (Cat. #[TA324668]) western blot analysis in A375 cell line lysates (35ug/lane). This demonstrates the MSX1 antibody detected the MSX1 protein (arrow).



MSX1 Antibody (Center) (Cat. #[TA324668]) western blot analysis in mouse spleen tissue lysates (35ug/lane). This demonstrates the MSX1 antibody detected the MSX1 protein (arrow).



IF image of U251 cell stained with MSX1 Antibody (Center) (Cat#[TA324668]). U251 cells were incubated with MSX1 primary antibody (1:25, 1 h at 37°C). For secondary antibody, Alexa Fluor® 488 conjugated donkey anti-rabbit antibody (green) was used (1:400). Cytoplasmic actin was counterstained with Alexa Fluor® 555 (red) conjugated Phalloidin (7 units/ml). MSX1 immunoreactivity is localized to Nucleus significantly.



IF image of SY5Y cells stained with MSX1 (Center) antibody. SY5Y cells were incubated with [TA324668] MSX1 (Center) primary antibody (1:200, 2 h at RT). For secondary antibody, Alexa Fluor® 488 conjugated donkey anti-rabbit antibody (green) was used (1:1000, 1h). Nuclei were counterstained with Hoechst 33342 (blue). Note the highly specific localization of the MSX1 mainly to the nucleus.