

Product datasheet for **TA324667**

Progesterone Receptor (PGR) Rabbit Polyclonal Antibody

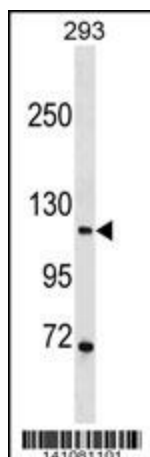
Product data:

Product Type:	Primary Antibodies
Applications:	IF, WB
Recommended Dilution:	IF: 1:10~50, WB: 1:1000
Reactivity:	Human
Host:	Rabbit
Isotype:	IgG
Clonality:	Polyclonal
Immunogen:	This PGR/PR antibody is generated from rabbits immunized with a KLH conjugated synthetic peptide between 816-843 amino acids from the C-terminal region of human PGR/PR.
Formulation:	Purified polyclonal antibody supplied in PBS with 0.09% (W/V) sodium azide.
Concentration:	lot specific
Purification:	This antibody is purified through a protein A column, followed by peptide affinity purification.
Conjugation:	Unconjugated
Storage:	Store at -20°C as received.
Stability:	Stable for 12 months from date of receipt.
Predicted Protein Size:	98981 Da
Gene Name:	progesterone receptor
Database Link:	NP_000917 Entrez Gene 5241 Human P06401
Synonyms:	NR3C3; PR
Protein Families:	Druggable Genome, Nuclear Hormone Receptor, Transcription Factors
Protein Pathways:	Oocyte meiosis, Progesterone-mediated oocyte maturation

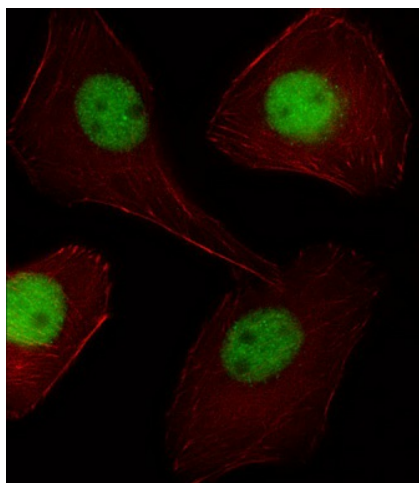


[View online »](#)

Product images:



PGR/PR Antibody (C-term) (Cat. #TA324667) western blot analysis in 293 cell line lysates (35ug/lane). This demonstrates the PGR/PR antibody detected the PGR/PR protein (arrow).



IF image of U251 cell stained with PGR/PR Antibody (C-term) (Cat#TA324667). U251 cells were incubated with PGR/PR primary antibody (1:25, 1 h at 37°C). For secondary antibody, Alexa Fluor® 488 conjugated donkey anti-rabbit antibody (1:400). Cytoplasmic actin was counterstained with Alexa Fluor® 555 (red) conjugated Phalloidin (7 units/ml). PGR/PR immunoreactivity is localized to Nucleus significantly and Vesicles weakly.