

Product datasheet for **TA324666S**

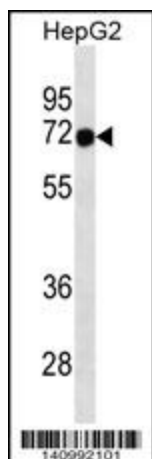
CHES1 (FOXN3) Rabbit Polyclonal Antibody

Product data:

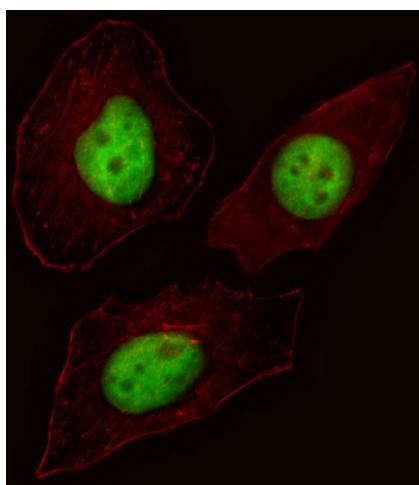
Product Type:	Primary Antibodies
Applications:	IF, WB
Recommended Dilution:	IF: 1:10~50, WB: 1:1000
Reactivity:	Human
Host:	Rabbit
Isotype:	IgG
Clonality:	Polyclonal
Immunogen:	This FOXN3 antibody is generated from rabbits immunized with a KLH conjugated synthetic peptide between 380-408 amino acids from the C-terminal region of human FOXN3.
Formulation:	Purified polyclonal antibody supplied in PBS with 0.09% (W/V) sodium azide.
Concentration:	lot specific
Purification:	This antibody is purified through a protein A column, followed by peptide affinity purification.
Conjugation:	Unconjugated
Storage:	Store at -20°C as received.
Stability:	Stable for 12 months from date of receipt.
Predicted Protein Size:	53835 Da
Gene Name:	forkhead box N3
Database Link:	NP_001078940 Entrez Gene 1112 Human O00409
Synonyms:	C14orf116; CHES1; PRO1635
Protein Families:	Druggable Genome, Transcription Factors

[View online »](#)

Product images:



FOXN3 Antibody (C-term) (Cat. #TA324666]) western blot analysis in HepG2 cell line lysates (35ug/lane). This demonstrates the FOXN3 antibody detected the FOXN3 protein (arrow).



IF image of HeLa cell stained with FOXN3 Antibody (C-term) (Cat#[TA324666]). HeLa cells were incubated with FOXN3 primary antibody (1:25, 1 h at 37°C). For secondary antibody, Alexa Fluor® 488 conjugated donkey anti-rabbit antibody (green) was used (1:400). Cytoplasmic actin was counterstained with Alexa Fluor® 555 (red) conjugated Phalloidin (7 units/ml). FOXN3 immunoreactivity is localized to Nucleus significantly.