

Product datasheet for **TA324664S**

RHOXF2B Rabbit Polyclonal Antibody

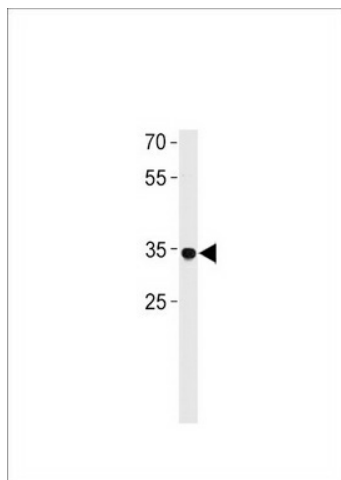
Product data:

Product Type:	Primary Antibodies
Applications:	IF, WB
Recommended Dilution:	WB: 1:1000, IF: 1:10~50
Reactivity:	Human
Host:	Rabbit
Isotype:	IgG
Clonality:	Polyclonal
Immunogen:	This RHOXF2B antibody is generated from rabbits immunized with a KLH conjugated synthetic peptide between 95-121 amino acids from the Central region of human RHOXF2B.
Formulation:	Purified polyclonal antibody supplied in PBS with 0.09% (W/V) sodium azide.
Concentration:	lot specific
Purification:	This antibody is purified through a protein A column, followed by peptide affinity purification.
Conjugation:	Unconjugated
Storage:	Store at -20°C as received.
Stability:	Stable for 12 months from date of receipt.
Predicted Protein Size:	31637 Da
Gene Name:	Rhox homeobox family member 2B
Database Link:	NP_001093155 Entrez Gene 727940 Human POC7M4
Synonyms:	member 2B; OTTHUMP00000023931; PEPP subfamily gene 2-like; Rhox homeobox family

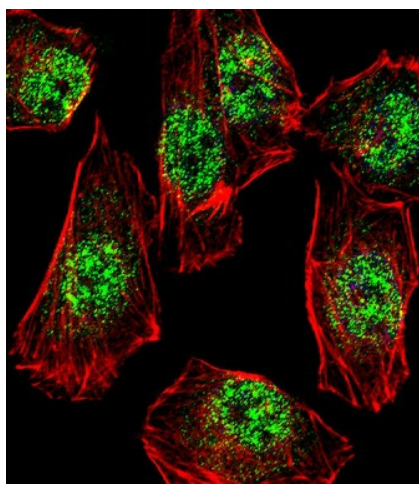


[View online »](#)

Product images:



RHOXF2B Antibody (Center) (Cat. #[TA324664]) western blot analysis in A549 cell line lysates (35ug/lane). This demonstrates the RHOXF2B antibody detected the RHOXF2B protein (arrow).



IF image of A549 cell stained with RHOXF2B Antibody (Center) (Cat#[TA324664]). A549 cells were incubated with RHOXF2B primary antibody (1:25, 1 h at 37°C). For secondary antibody, Alexa Fluor® 488 conjugated donkey anti-rabbit antibody (green) was used (1:400). Cytoplasmic actin was counterstained with Alexa Fluor® 555 (red) conjugated Phalloidin (7 units/ml). Nuclei were counterstained with DAPI (blue). RHOXF2B immunoreactivity is localized to Nucleus significantly.