

## Product datasheet for **TA324663S**

### MRPL28 Rabbit Polyclonal Antibody

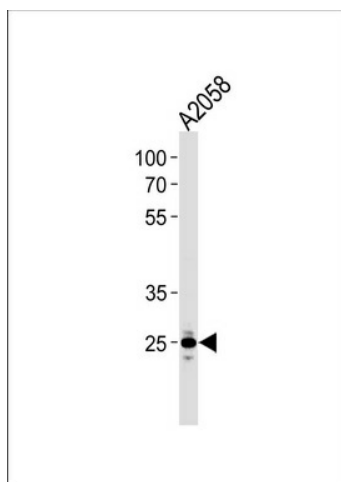
#### Product data:

|                         |  |
|-------------------------|--|
| Product Type:           | Primary Antibodies   |
| Applications:           | IF, WB   |
| Recommended Dilution:   | WB: 1:1000, IF: 1:10~50  |
| Reactivity:             | Human  |
| Host:                   | Rabbit   |
| Isotype:                | IgG  |
| Clonality:              | Polyclonal   |
| Immunogen:              | This MRPL28 antibody is generated from rabbits immunized with a KLH conjugated synthetic peptide between 28-55 amino acids from the N-terminal region of human MRPL28. |
| Formulation:            | Purified polyclonal antibody supplied in PBS with 0.09% (W/V) sodium azide.  |
| Concentration:          | lot specific   |
| Purification:           | This antibody is purified through a protein A column, followed by peptide affinity purification.   |
| Conjugation:            | Unconjugated   |
| Storage:                | Store at -20°C as received.  |
| Stability:              | Stable for 12 months from date of receipt.   |
| Predicted Protein Size: | 30157 Da   |
| Gene Name:              | mitochondrial ribosomal protein L28  |
| Database Link:          | <a href="#">NP_006419</a><br><a href="#">Entrez Gene 10573 Human</a><br><a href="#">Q13084</a>   |
| Synonyms:               | MAAT1; p15   |

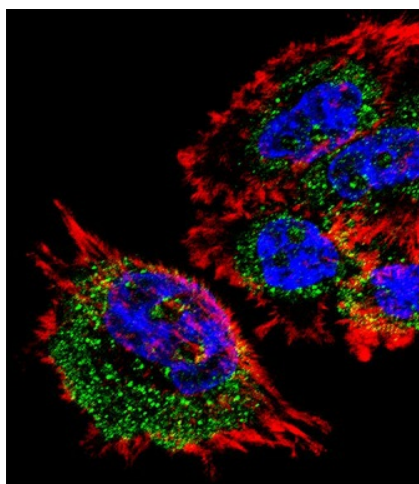


[View online »](#)

## Product images:



MRPL28 Antibody (N-term) (Cat. #TA324663]) western blot analysis in A2058 cell line lysates (35ug/lane). This demonstrates the MRPL28 antibody detected the MRPL28 protein (arrow).



IF image of A431 cell stained with MRPL28 Antibody (N-term) (Cat#[TA324663]). A431 cells were incubated with MRPL28 primary antibody (1:25, 1 h at 37°C). For secondary antibody, Alexa Fluor® 488 conjugated donkey anti-rabbit antibody (green) was used (1:400). Cytoplasmic actin was counterstained with Alexa Fluor® 555 (red) conjugated Phalloidin (7 units/ml). Nuclei were counterstained with DAPI (blue). MRPL28 immunoreactivity is localized to Mitochondria significantly.