

## Product datasheet for **TA324662**

### AF10 (MLLT10) Rabbit Polyclonal Antibody

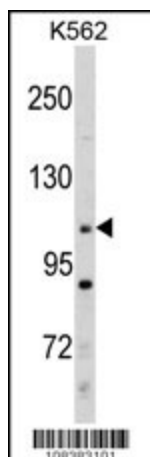
#### Product data:

Product Type:	Primary Antibodies
Applications:	IF, WB
Recommended Dilution:	WB: 1:1000, IF: 1:10~50
Reactivity:	Human
Host:	Rabbit
Isotype:	IgG
Clonality:	Polyclonal
Immunogen:	This MLLT10 (AF10) antibody is generated from rabbits immunized with a KLH conjugated synthetic peptide between 294-323 amino acids from the Central region of human MLLT10 (AF10).
Formulation:	Purified polyclonal antibody supplied in PBS with 0.09% (W/V) sodium azide.
Concentration:	lot specific
Purification:	This antibody is prepared by Saturated Ammonium Sulfate (SAS) precipitation followed by dialysis against PBS.
Conjugation:	Unconjugated
Storage:	Store at -20°C as received.
Stability:	Stable for 12 months from date of receipt.
Predicted Protein Size:	113320 Da
Gene Name:	myeloid/lymphoid or mixed-lineage leukemia; translocated to, 10
Database Link:	<a href="#">NP_004632</a> <a href="#">Entrez Gene 8028 Human</a> <a href="#">P55197</a>
Synonyms:	AF10
Protein Families:	Druggable Genome, Transcription Factors

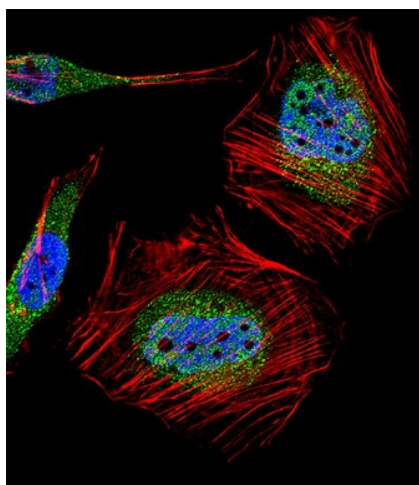


[View online »](#)

## Product images:



Western blot analysis of MLLT10 (Cat. #TA324662) in K562 cell line lysates (35ug/lane). MLLT10 (arrow) was detected using the purified Pab. (2ug/ml)



IF image of HeLa cell stained with MLLT10 (AF10) Antibody (Center) (Cat#TA324662). HeLa cells were incubated with MLLT10 primary antibody (1:25, 1 h at 37°C). For secondary antibody, Alexa Fluor® 488 conjugated donkey anti-rabbit antibody (green) was used (1:400). Cytoplasmic actin was counterstained with Alexa Fluor® 555 (red) conjugated Phalloidin (7 units/ml). Nuclei were counterstained with DAPI (blue). MLLT10 immunoreactivity is localized to Nucleus significantly and Cytoplasm weakly.