

## Product datasheet for **TA324661S**

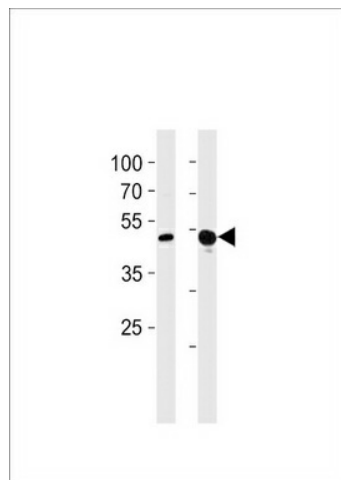
### TBX4 Rabbit Polyclonal Antibody

#### Product data:

Product Type:	Primary Antibodies
Applications:	WB
Recommended Dilution:	WB: 1:1000
Reactivity:	Human, Mouse (Predicted: Rat, Chicken, Xenopus)
Host:	Rabbit
Isotype:	IgG
Clonality:	Polyclonal
Immunogen:	This TBX4 antibody is generated from rabbits immunized with a KLH conjugated synthetic peptide between 103-129 amino acids from the N-terminal region of human TBX4.
Formulation:	Purified polyclonal antibody supplied in PBS with 0.09% (W/V) sodium azide.
Concentration:	lot specific
Purification:	This antibody is purified through a protein A column, followed by peptide affinity purification.
Conjugation:	Unconjugated
Storage:	Store at -20°C as received.
Stability:	Stable for 12 months from date of receipt.
Predicted Protein Size:	60204 Da
Gene Name:	T-box 4
Database Link:	<a href="#">NP_060958</a> <a href="#">Entrez Gene 21387 Mouse</a> <a href="#">Entrez Gene 303399 Rat</a> <a href="#">Entrez Gene 9496 Human</a> <a href="#">P57082</a>
Synonyms:	ICPPS; SPS



[View online »](#)

**Product images:**

TBX4 Antibody (N-term) (Cat. #[TA324661])  
western blot analysis in A549, mouse NIH/3T3 cell  
line lysates (35ug/lane). This demonstrates the  
TBX4 antibody detected the TBX4 protein (arrow).