

## Product datasheet for **TA324658S**

### PCGF6 Rabbit Polyclonal Antibody

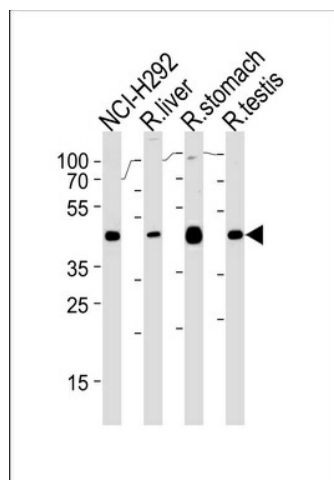
#### Product data:

Product Type:	Primary Antibodies
Applications:	WB
Recommended Dilution:	WB: 1:1000
Reactivity:	Human (Predicted: Mouse, Rat)
Host:	Rabbit
Isotype:	IgG
Clonality:	Polyclonal
Immunogen:	This PCGF6 antibody is generated from rabbits immunized with a KLH conjugated synthetic peptide between 190-217 amino acids from the Central region of human PCGF6.
Formulation:	Purified polyclonal antibody supplied in PBS with 0.09% (W/V) sodium azide.
Concentration:	lot specific
Purification:	This antibody is purified through a protein A column, followed by peptide affinity purification.
Conjugation:	Unconjugated
Storage:	Store at -20°C as received.
Stability:	Stable for 12 months from date of receipt.
Predicted Protein Size:	39047 Da
Gene Name:	polycomb group ring finger 6
Database Link:	<a href="#">NP_001011663</a> <a href="#">Entrez Gene 71041 Mouse</a> <a href="#">Entrez Gene 309457 Rat</a> <a href="#">Entrez Gene 84108 Human</a> <a href="#">Q9BYE7</a>
Synonyms:	MBLR; RNF134
Protein Families:	Transcription Factors



[View online »](#)

## Product images:



PCGF6 Antibody (Center) (Cat.# [TA324658])  
western blot analysis in NCI-H292, rat liver,  
stomach and testis cell line lysates  
(35ug/lane). This demonstrates the PCGF6  
antibody detected the PCGF6 protein (arrow).