

## Product datasheet for **TA324657**

### TAF10 Rabbit Polyclonal Antibody

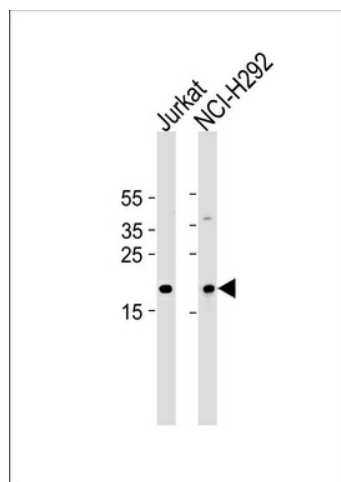
#### Product data:

Product Type:	Primary Antibodies
Applications:	WB
Recommended Dilution:	WB: 1:1000
Reactivity:	Human (Predicted: Mouse)
Host:	Rabbit
Isotype:	IgG
Clonality:	Polyclonal
Immunogen:	This TAF10 antibody is generated from rabbits immunized with a KLH conjugated synthetic peptide between 121-150 amino acids from the Central region of human TAF10.
Formulation:	Purified polyclonal antibody supplied in PBS with 0.09% (W/V) sodium azide.
Concentration:	lot specific
Purification:	This antibody is purified through a protein A column, followed by peptide affinity purification.
Conjugation:	Unconjugated
Storage:	Store at -20°C as received.
Stability:	Stable for 12 months from date of receipt.
Predicted Protein Size:	21711 Da
Gene Name:	TATA-box binding protein associated factor 10
Database Link:	<a href="#">NP_006275</a> <a href="#">Entrez Gene 24075 Mouse</a> <a href="#">Entrez Gene 6881 Human</a> <a href="#">Q12962</a>
Synonyms:	TAF2A; TAF2H; TAFII30
Protein Families:	Druggable Genome, Transcription Factors
Protein Pathways:	Basal transcription factors



[View online »](#)

## Product images:



TAF10 Antibody (Center) (Cat. #TA324657)  
western blot analysis in Jurkat, NCI-H292 cell line  
lysates (35ug/lane). This demonstrates the TAF10  
antibody detected the TAF10 protein (arrow).