

Product datasheet for **TA324655**

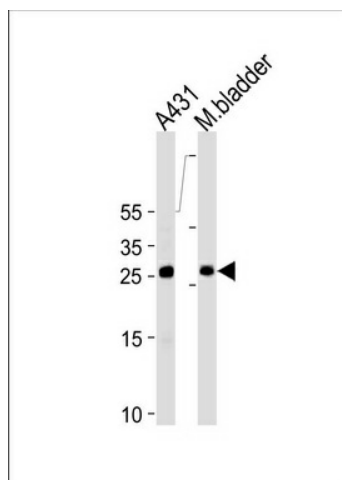
14-3-3 sigma (SFN) Rabbit Polyclonal Antibody

Product data:

Product Type:	Primary Antibodies
Applications:	WB
Recommended Dilution:	WB: 1:1000
Reactivity:	Human, Mouse (Predicted: Bovine)
Host:	Rabbit
Isotype:	IgG
Clonality:	Polyclonal
Immunogen:	This SFN antibody is generated from rabbits immunized with a KLH conjugated synthetic peptide between 120-149 amino acids from the Central region of human SFN.
Formulation:	Purified polyclonal antibody supplied in PBS with 0.09% (W/V) sodium azide.
Concentration:	lot specific
Purification:	This antibody is purified through a protein A column, followed by peptide affinity purification.
Conjugation:	Unconjugated
Storage:	Store at -20°C as received.
Stability:	Stable for 12 months from date of receipt.
Predicted Protein Size:	27774 Da
Gene Name:	stratifin
Database Link:	NP_006133 Entrez Gene 55948 Mouse Entrez Gene 2810 Human P31947
Synonyms:	YWHAS
Protein Families:	Druggable Genome, Secreted Protein
Protein Pathways:	Cell cycle, p53 signaling pathway



[View online »](#)

Product images:

SFN Antibody (Center) (Cat. #TA324655) western blot analysis in A431 cell line and mouse bladder tissue lysates (35ug/lane). This demonstrates the SFN antibody detected the SFN protein (arrow).