

Product datasheet for **TA324654**

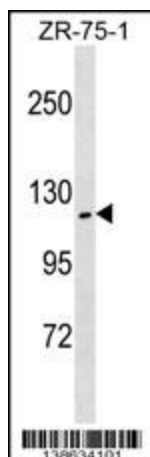
ZHX2 Rabbit Polyclonal Antibody

Product data:

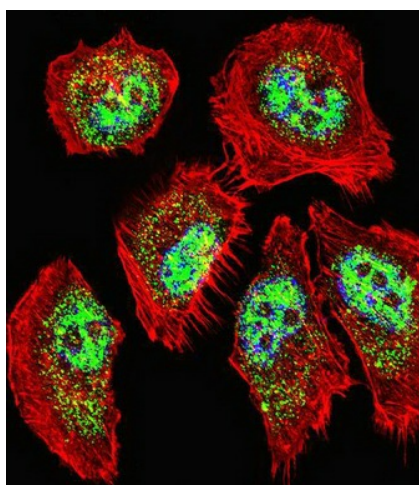
Product Type:	Primary Antibodies
Applications:	IF, WB
Recommended Dilution:	WB: 1:1000, IF: 1:10~50
Reactivity:	Human (Predicted: Mouse)
Host:	Rabbit
Isotype:	IgG
Clonality:	Polyclonal
Immunogen:	This ZHX2 antibody is generated from rabbits immunized with a KLH conjugated synthetic peptide between 105-131 amino acids from the N-terminal region of human ZHX2.
Formulation:	Purified polyclonal antibody supplied in PBS with 0.09% (W/V) sodium azide.
Concentration:	lot specific
Purification:	This antibody is purified through a protein A column, followed by peptide affinity purification.
Conjugation:	Unconjugated
Storage:	Store at -20°C as received.
Stability:	Stable for 12 months from date of receipt.
Predicted Protein Size:	92307 Da
Gene Name:	zinc fingers and homeoboxes 2
Database Link:	NP_055758 Entrez Gene 387609 Mouse Entrez Gene 22882 Human Q9Y6X8
Synonyms:	AFR1; RAF
Protein Families:	Transcription Factors



[View online »](#)

Product images:

ZHX2 Antibody (N-term) (Cat. #TA324654) western blot analysis in ZR-75-1 cell line lysates (35ug/lane). This demonstrates the ZHX2 antibody detected the ZHX2 protein (arrow).



IF image of A549 cell stained with ZHX2 Antibody (N-term) (Cat#TA324654). A549 cells were incubated with ZHX2 primary antibody (1:25, 1 h at 37°C). For secondary antibody, Alexa Fluor® 488 conjugated donkey anti-rabbit antibody (1:400). Cytoplasmic actin was counterstained with Alexa Fluor® 555 (red) conjugated Phalloidin (7 units/ml). Nuclei were counterstained with DAPI (blue). ZHX2 immunoreactivity is localized to Nucleus significantly and Cytoplasm weakly.