

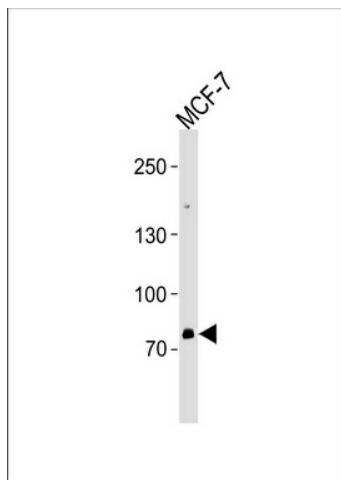
Product datasheet for **TA324648S**

ZNF483 Rabbit Polyclonal Antibody

Product data:

Product Type:	Primary Antibodies
Applications:	WB
Recommended Dilution:	WB: 1:1000
Reactivity:	Human
Host:	Rabbit
Isotype:	IgG
Clonality:	Polyclonal
Immunogen:	This ZNF483 antibody is generated from rabbits immunized with a KLH conjugated synthetic peptide between 281-309 amino acids from the Central region of human ZNF483.
Formulation:	Purified polyclonal antibody supplied in PBS with 0.09% (W/V) sodium azide.
Concentration:	lot specific
Purification:	This antibody is purified through a protein A column, followed by peptide affinity purification.
Conjugation:	Unconjugated
Storage:	Store at -20°C as received.
Stability:	Stable for 12 months from date of receipt.
Predicted Protein Size:	85098 Da
Gene Name:	zinc finger protein 483
Database Link:	NP_001007170 Entrez Gene 158399 Human Q8TF39
Synonyms:	ZKSCAN16; ZSCAN48
Protein Families:	Transcription Factors


[View online »](#)

Product images:

ZNF483 Antibody (Center) (Cat. #TA324648])
western blot analysis in MCF-7 cell line lysates
(35ug/lane). This demonstrates the ZNF483
antibody detected the ZNF483 protein (arrow).