

## Product datasheet for **TA324644**

### LAMP3 Rabbit Polyclonal Antibody

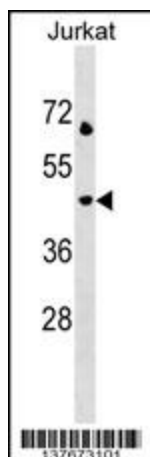
#### Product data:

Product Type:	Primary Antibodies
Applications:	IF, WB
Recommended Dilution:	IF: 1:100, WB: 1:1000
Reactivity:	Human
Host:	Rabbit
Isotype:	IgG
Clonality:	Polyclonal
Immunogen:	This LAMP3 antibody is generated from rabbits immunized with a KLH conjugated synthetic peptide between 8-38 amino acids from the N-terminal region of human LAMP3.
Formulation:	Purified polyclonal antibody supplied in PBS with 0.09% (W/V) sodium azide.
Concentration:	lot specific
Purification:	This antibody is purified through a protein A column, followed by peptide affinity purification.
Conjugation:	Unconjugated
Storage:	Store at -20°C as received.
Stability:	Stable for 12 months from date of receipt.
Predicted Protein Size:	44346 Da
Gene Name:	lysosomal associated membrane protein 3
Database Link:	<a href="#">NP_055213</a> <a href="#">Entrez Gene 27074 Human</a> <a href="#">Q9UQV4</a>
Synonyms:	CD208; DC-LAMP; DC LAMP; DCLAMP; LAMP; LAMP-3; TSC403
Protein Families:	Transmembrane
Protein Pathways:	Lysosome

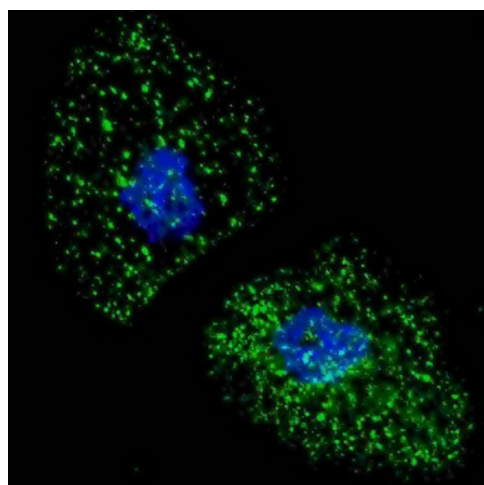


[View online »](#)

## Product images:



LAMP3 Antibody (N-term) (Cat. #TA324644) western blot analysis in Jurkat cell line lysates (35ug/lane). This demonstrates the LAMP3 antibody detected the LAMP3 protein (arrow).



IF image of U251 cells stained with LAMP3 (N-term) antibody. U251 cells were treated with Chloroquine, then incubated with TA324644 LAMP3 (N-term) primary antibody (1:100, 2 h at RT). For secondary antibody, Alexa Fluor® 488 conjugated donkey anti-rabbit antibody (green) was used (1:1000, 1h). Nuclei were counterstained with Hoechst 33342 (blue). LAMP3 immunoreactivity is localized to autophagic vacuoles in the cytoplasm of U251 cells.