

## Product datasheet for **TA324642S**

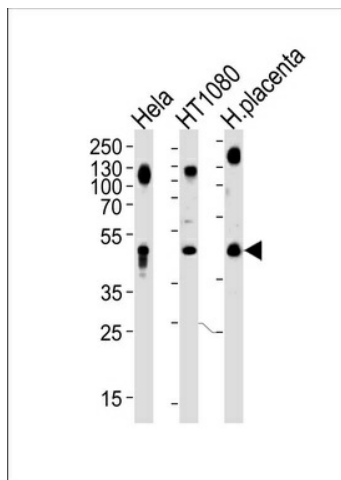
### LAMP1 Rabbit Polyclonal Antibody

#### Product data:

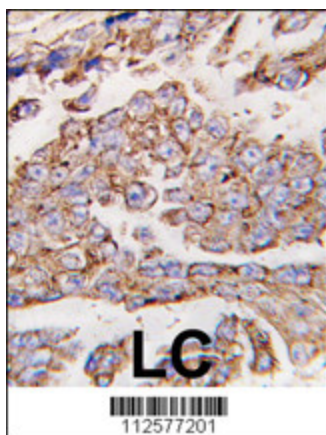
Product Type:	Primary Antibodies
Applications:	IF, IHC, WB
Recommended Dilution:	WB: 1:1000, IF: 1:200, IHC: 1:10~50
Reactivity:	Human, Mouse
Host:	Rabbit
Isotype:	IgG
Clonality:	Polyclonal
Immunogen:	This LAMP1 antibody is generated from rabbits immunized with a KLH conjugated synthetic peptide between 125-154 amino acids from the N-terminal region of human LAMP1.
Formulation:	Purified polyclonal antibody supplied in PBS with 0.09% (W/V) sodium azide.
Concentration:	lot specific
Purification:	This antibody is purified through a protein A column, followed by peptide affinity purification.
Conjugation:	Unconjugated
Storage:	Store at -20°C as received.
Stability:	Stable for 12 months from date of receipt.
Predicted Protein Size:	44882 Da
Gene Name:	lysosomal associated membrane protein 1
Database Link:	<a href="#">NP_005552</a> <a href="#">Entrez Gene 16783 Mouse</a> <a href="#">Entrez Gene 3916 Human</a> <a href="#">P11279</a>
Synonyms:	CD107a; LAMPA; LGP120
Protein Families:	ES Cell Differentiation/IPS, Transmembrane
Protein Pathways:	Lysosome


[View online »](#)

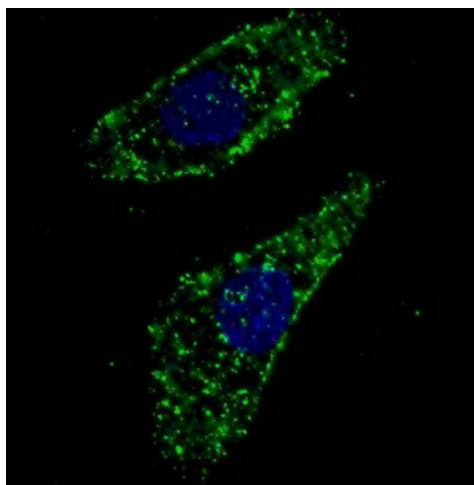
## Product images:



Western blot analysis of lysates from HeLa, HT1080 cell line and human placenta tissue (from left to right), using LAMP1 Antibody (N-term) (Cat. #TA324642S). TA324642S was diluted at 1:1000 at each lane. A goat anti-rabbit IgG H&L (HRP) at 1:5000 dilution was used as the secondary antibody. Lysates at 35ug per lane.



Formalin-fixed and paraffin-embedded human lung carcinoma tissue reacted with \*LAMP1 antibody (N-term) (Cat.#TA324642S), which was peroxidase-conjugated to the secondary antibody, followed by DAB staining. This data demonstrates the use of this antibody for immunohistochemistry; clinical relevance has not been evaluated.



IF image of U251 cells stained with LAMP1 (N-term) antibody. U251 cells were treated with Chloroquine, then incubated with [TA324642] LAMP1 (N-term) primary antibody (1:200, 2 h at RT). For secondary antibody, Alexa Fluor® 488 conjugated donkey anti-rabbit antibody (green) was used (1:1000, 1h). Nuclei were counterstained with Hoechst 33342 (blue). LAMP1 immunoreactivity is localized to autophagic vacuoles in the cytoplasm of U251 cells.