

Product datasheet for **TA324640**

Non Neuronal Enolase (ENO1) Mouse Monoclonal Antibody [Clone ID: 786CT6.6.4]

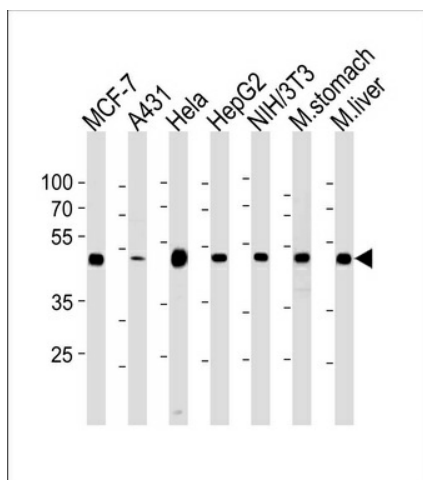
Product data:

Product Type:	Primary Antibodies
Clone Name:	786CT6.6.4
Applications:	WB
Recommended Dilution:	WB: 1:1000
Reactivity:	Human, Mouse
Host:	Mouse
Isotype:	IgG
Clonality:	Monoclonal
Immunogen:	Purified His-tagged ENO1 protein was used to produced this monoclonal antibody.
Formulation:	Purified monoclonal antibody supplied in PBS with 0.09% (W/V) sodium azide.
Concentration:	lot specific
Purification:	This antibody is purified through a protein G column, followed by dialysis against PBS.
Conjugation:	Unconjugated
Storage:	Store at -20°C as received.
Stability:	Stable for 12 months from date of receipt.
Predicted Protein Size:	47169 Da
Gene Name:	enolase 1
Database Link:	NP_001419 Entrez Gene 13806 Mouse Entrez Gene 2023 Human P06733
Synonyms:	ENO1L1; MPB1; NNE; PPH
Protein Families:	Druggable Genome, Transcription Factors
Protein Pathways:	Glycolysis / Gluconeogenesis, Metabolic pathways, RNA degradation



[View online »](#)

Product images:



ENO1 Antibody (Cat. #TA324640) western blot analysis in MCF-7, A431, HeLa, HepG2, mouse NIH/3T3 cell line and mouse stomach, liver tissue lysates (35ug/lane). This demonstrates the ENO1 antibody detected the ENO1 protein (arrow).