

## Product datasheet for **TA324639**

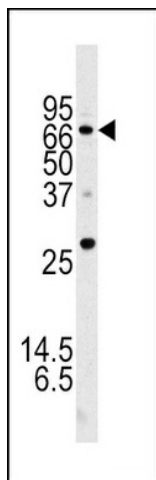
### ATG16L1 Rabbit Polyclonal Antibody

#### Product data:

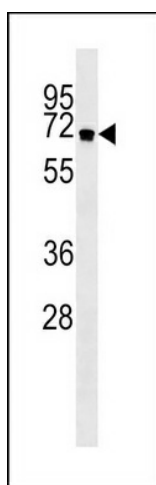
Product Type:	Primary Antibodies
Applications:	IF, IHC, WB
Recommended Dilution:	IF: 1:25, WB: 1:1000, IHC: 1:10~50
Reactivity:	Human, Mouse
Host:	Rabbit
Isotype:	IgG
Clonality:	Polyclonal
Immunogen:	This ATG16L antibody is generated from rabbits immunized with a KLH conjugated synthetic peptide between 161-190 amino acids from human ATG16L.
Formulation:	Purified polyclonal antibody supplied in PBS with 0.09% (W/V) sodium azide.
Concentration:	lot specific
Purification:	This antibody is purified through a protein A column, followed by peptide affinity purification.
Conjugation:	Unconjugated
Storage:	Store at -20°C as received.
Stability:	Stable for 12 months from date of receipt.
Predicted Protein Size:	68265 Da
Gene Name:	autophagy related 16 like 1
Database Link:	<a href="#">NP_942593</a> <a href="#">Entrez Gene 77040 Mouse</a> <a href="#">Entrez Gene 55054 Human</a> <a href="#">Q676U5</a>
Synonyms:	APG16L; ATG16A; ATG16L; IBD10; WDR30



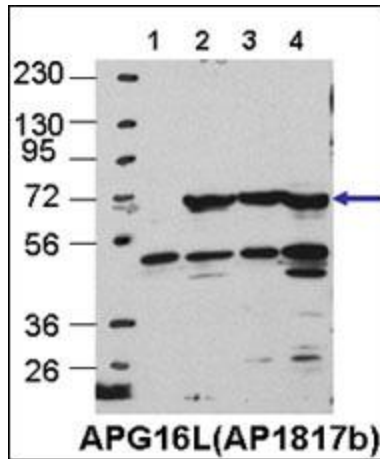
[View online »](#)

**Product images:**


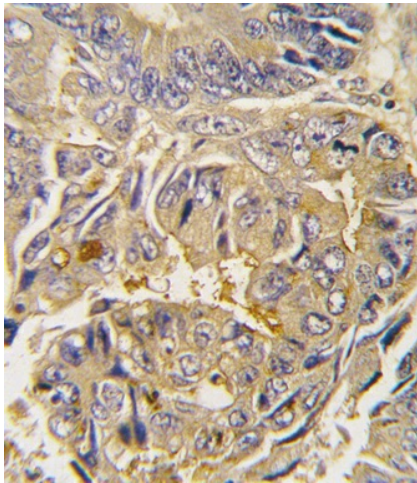
Western blot of APG16L (L92) Pab (Cat. #TA324639) in mouse brain tissue lysate.



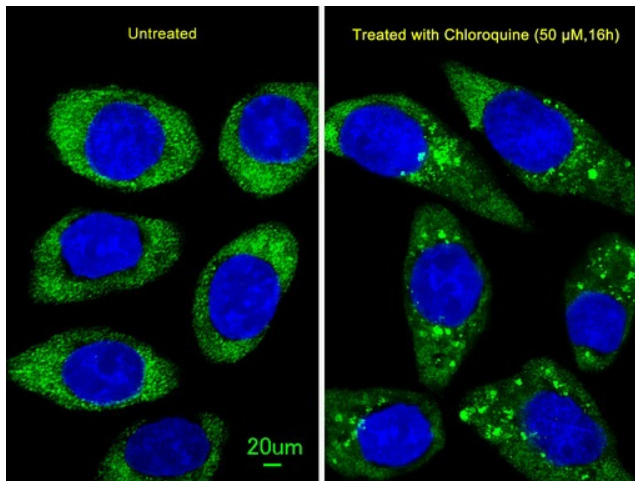
APG16L Antibody (Cat. #TA324639) western blot analysis in NCI-H460 cell line lysates (35ug/lane). This demonstrates the APG16L antibody detected the APG16L protein (arrow).



Cos7, HEK293, MEF, and HeLa cells, left to right, respectively. Data courtesy of Drs. Jiefei Geng and Dan Klionsky, University of Michigan.



Formalin-fixed and paraffin-embedded human colon carcinoma tissue reacted with Autophagy APG16L antibody (L176), which was peroxidase-conjugated to the secondary antibody, followed by DAB staining. This data demonstrates the use of this antibody for immunohistochemistry; clinical relevance has not been evaluated.



Immunofluorescent analysis of U251 cells, using ATG16L Antibody (Cat. #TA324639). U251 cells (right) were treated with Chloroquine (50  $\mu$ M, 16h). TA324639 was diluted at 1:25 dilution. Alexa Fluor 488-conjugated goat anti-rabbit IgG at 1:400 dilution was used as the secondary antibody (green). DAPI was used to stain the cell nuclear (blue).