

Product datasheet for **TA324638**

Retinoic Acid Receptor beta (RARβ) Rabbit Polyclonal Antibody

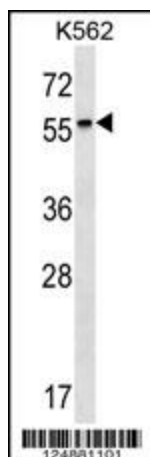
Product data:

Product Type:	Primary Antibodies
Applications:	IF, WB
Recommended Dilution:	WB: 1:1000, IF: 1:10~50
Reactivity:	Human (Predicted: Mouse, Chicken)
Host:	Rabbit
Isotype:	IgG
Clonality:	Polyclonal
Immunogen:	This RARB antibody is generated from rabbits immunized with a KLH conjugated synthetic peptide between 168-195 amino acids from the Central region of human RARB.
Formulation:	Purified polyclonal antibody supplied in PBS with 0.09% (W/V) sodium azide.
Concentration:	lot specific
Purification:	This antibody is purified through a protein A column, followed by peptide affinity purification.
Conjugation:	Unconjugated
Storage:	Store at -20°C as received.
Stability:	Stable for 12 months from date of receipt.
Predicted Protein Size:	50489 Da
Gene Name:	retinoic acid receptor beta
Database Link:	NP_000956 Entrez Gene 218772 Mouse Entrez Gene 5915 Human P10826
Synonyms:	HAP; MCOPS12; NR1B2; RARbeta1; RRB2
Protein Families:	Druggable Genome, Nuclear Hormone Receptor, Transcription Factors
Protein Pathways:	Non-small cell lung cancer, Pathways in cancer, Small cell lung cancer

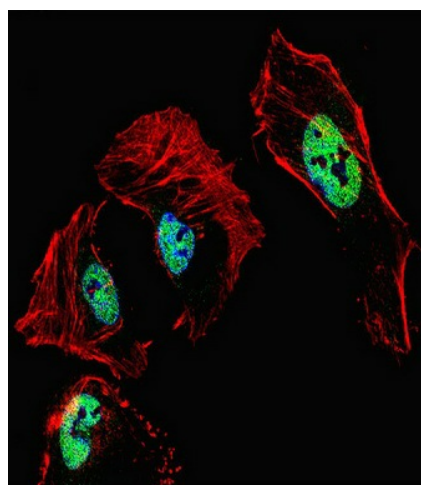


[View online »](#)

Product images:



RARB Antibody (Center) (Cat. #TA324638) western blot analysis in K562 cell line lysates (35ug/lane). This demonstrates the RARB antibody detected the RARB protein (arrow).



IF image of HeLa cell stained with RARB Antibody (Center) (Cat#TA324638). HeLa cells were incubated with RARB primary antibody (1:25, 1 h at 37°C). For secondary antibody, Alexa Fluor® 488 conjugated donkey anti-rabbit antibody (1:400). Cytoplasmic actin was counterstained with Alexa Fluor® 555 (red) conjugated Phalloidin (7 units/ml). Nuclei were counterstained with DAPI (blue). RARB immunoreactivity is localized to nucleus significantly.