

## Product datasheet for **TA324637**

### ATG9A Rabbit Polyclonal Antibody

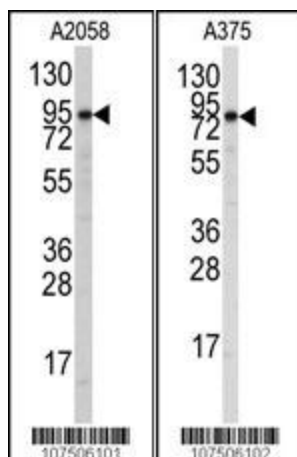
#### Product data:

Product Type:	Primary Antibodies
Applications:	IF, IHC, WB
Recommended Dilution:	IF: 1:100, WB: 1:1000, IHC: 1:50~100
Reactivity:	Human
Host:	Rabbit
Isotype:	IgG
Clonality:	Polyclonal
Immunogen:	This ATG9A antibody is generated from rabbits immunized with a KLH conjugated synthetic peptide between 717-746 amino acids from the C-terminal region of human ATG9A.
Formulation:	Purified polyclonal antibody supplied in PBS with 0.09% (W/V) sodium azide.
Concentration:	lot specific
Purification:	This antibody is purified through a protein A column, followed by peptide affinity purification.
Conjugation:	Unconjugated
Storage:	Store at -20°C as received.
Stability:	Stable for 12 months from date of receipt.
Predicted Protein Size:	94447 Da
Gene Name:	autophagy related 9A
Database Link:	<a href="#">NP_001070666</a> <a href="#">Entrez Gene 79065 Human</a> <a href="#">Q7Z3C6</a>
Synonyms:	APG9L1; mATG9; MGD3208
Protein Families:	Transmembrane

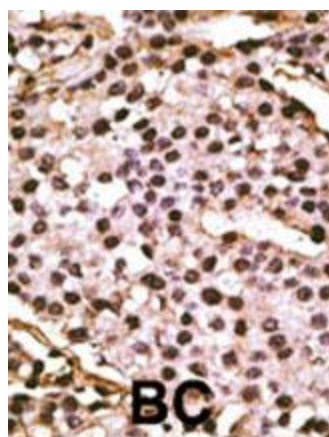


[View online »](#)

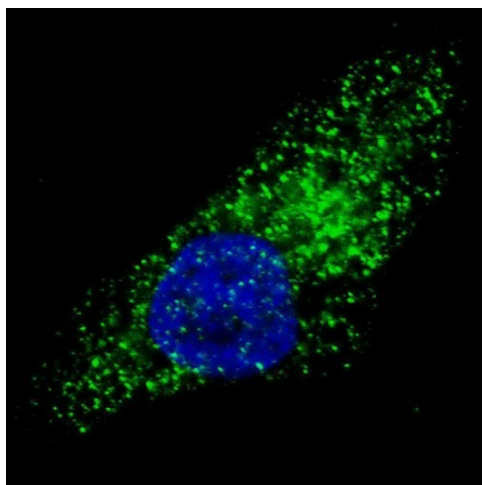
## Product images:



Western blot analysis of anti-Autophagy APG9L1 Antibody (C-term) (Cat.#TA324637) in A2058 and A375 cell line lysates (35ug/lane). APG9L1 (arrow) was detected using the purified Pab.



Formalin-fixed and paraffin-embedded human cancer tissue reacted with the primary antibody, which was peroxidase-conjugated to the secondary antibody, followed by DAB staining. This data demonstrates the use of this antibody for immunohistochemistry; clinical relevance has not been evaluated. BC = breast carcinoma; HC = hepatocarcinoma.



IF image of U251 cells stained with ATG9A (C-term) antibody. U251 cells were treated with Chloroquine, then incubated with TA324637 ATG9A (C-term) primary antibody (1:100, 2 h at RT). For secondary antibody, Alexa Fluor® 488 conjugated donkey anti-rabbit antibody (green) was used (1:1000, 1h). Nuclei were counterstained with Hoechst 33342 (blue). ATG9A immunoreactivity is localized to autophagic vacuoles in the cytoplasm of U251 cells.