

Product datasheet for **TA324636**

ATG7 Rabbit Polyclonal Antibody

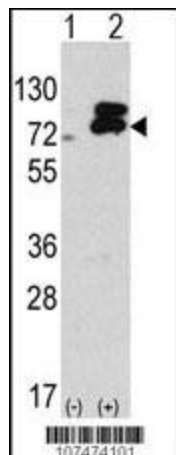
Product data:

Product Type:	Primary Antibodies
Applications:	IF, IHC, WB
Recommended Dilution:	IF: 1:25, WB: 1:1000, IHC: 1:50~100
Reactivity:	Human (Predicted: Mouse, Rat, Chicken)
Host:	Rabbit
Isotype:	IgG
Clonality:	Polyclonal
Immunogen:	This ATG7 antibody is generated from rabbits immunized with a KLH conjugated synthetic peptide between 540-569 amino acids from the C-terminal region of human ATG7.
Formulation:	Purified polyclonal antibody supplied in PBS with 0.09% (W/V) sodium azide.
Concentration:	lot specific
Purification:	This antibody is purified through a protein A column, followed by peptide affinity purification.
Conjugation:	Unconjugated
Storage:	Store at -20°C as received.
Stability:	Stable for 12 months from date of receipt.
Predicted Protein Size:	77960 Da
Gene Name:	autophagy related 7
Database Link:	NP_006386 Entrez Gene 74244 Mouse Entrez Gene 312647 Rat Entrez Gene 10533 Human O95352
Synonyms:	APG7-LIKE; APG7L; GSA7
Protein Pathways:	Regulation of autophagy

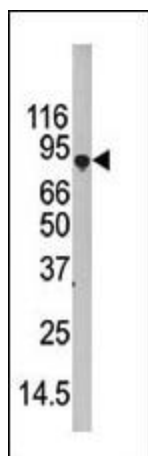


[View online »](#)

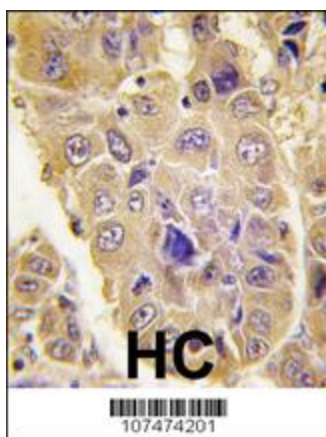
Product images:



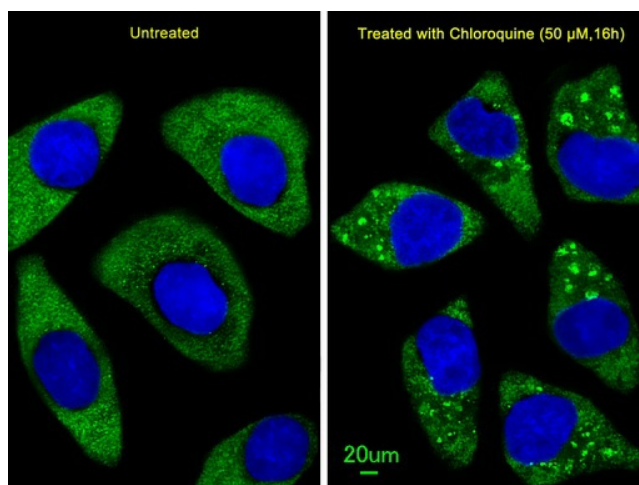
Western blot analysis of APG7L (C-term) Pab (Cat. #TA324636) in 293 cell line lysates transiently transfected with the ATG7 gene (2ug/lane).



Western blot analysis of APG7L Pab (Cat. #TA324636) in 293 cell line lysate (35ug/lane). APG7L (arrow) was detected using the purified Pab.



Formalin-fixed and paraffin-embedded human hepatocarcinoma tissue reacted with Autophagy APG7L antibody (C-term), which was peroxidase-conjugated to the secondary antibody, followed by DAB staining. This data demonstrates the use of this antibody for immunohistochemistry; clinical relevance has not been evaluated.



Immunofluorescent analysis of U251 cells, using ATG7 Antibody (C-term) (Cat. #TA324636). U251 cells (right) were treated with Chloroquine (50 μ M, 16h). TA324636 was diluted at 1:25 dilution. Alexa Fluor 488-conjugated goat anti-rabbit IgG at 1:400 dilution was used as the secondary antibody (green). DAPI was used to stain the cell nuclear (blue).