

## Product datasheet for **TA324635S**

### ATG7 Rabbit Polyclonal Antibody

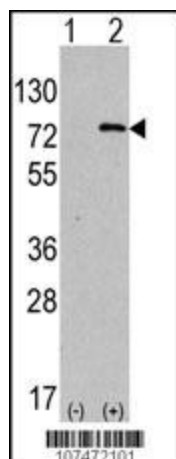
#### Product data:

Product Type:	Primary Antibodies
Applications:	IF, IHC, WB
Recommended Dilution:	IF: 1:200, WB: 1:1000, IHC: 1:50~100
Reactivity:	Human, Mouse (Predicted: Rat)
Host:	Rabbit
Isotype:	IgG
Clonality:	Polyclonal
Immunogen:	This ATG7 antibody is generated from rabbits immunized with a KLH conjugated synthetic peptide between 494-523 amino acids from human ATG7.
Formulation:	Purified polyclonal antibody supplied in PBS with 0.09% (W/V) sodium azide.
Concentration:	lot specific
Purification:	This antibody is prepared by Saturated Ammonium Sulfate (SAS) precipitation followed by dialysis against PBS.
Conjugation:	Unconjugated
Storage:	Store at -20°C as received.
Stability:	Stable for 12 months from date of receipt.
Predicted Protein Size:	77960 Da
Gene Name:	autophagy related 7
Database Link:	<a href="#">NP_006386</a> <a href="#">Entrez Gene 74244 Mouse</a> <a href="#">Entrez Gene 312647 Rat</a> <a href="#">Entrez Gene 10533 Human</a> <a href="#">O95352</a>
Synonyms:	APG7-LIKE; APG7L; GSA7
Protein Pathways:	Regulation of autophagy

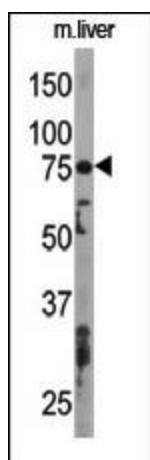


[View online »](#)

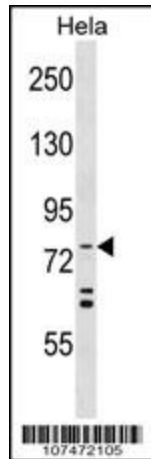
## Product images:



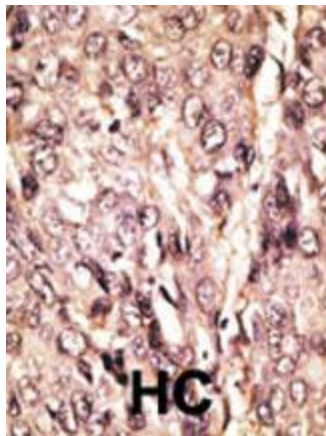
Western blot analysis of anti-hAPG7L-R509 Pab (Cat. #[TA324635]) in 293 cell line lysates transiently transfected with the ATG7 gene (2ug/lane). hAPG7L-R509 (arrow) was detected using the purified Pab.



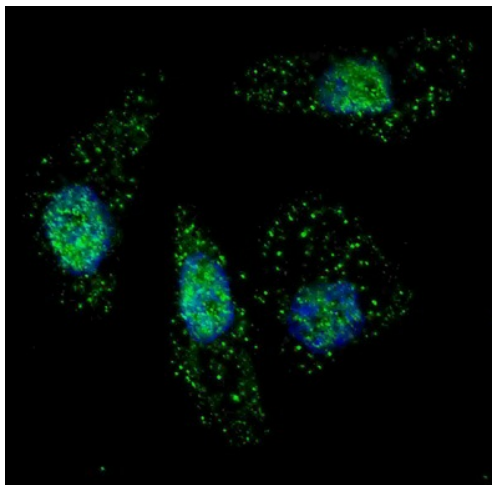
The anti-APG7L Pab (Cat. #[TA324635]) is used in Western blot to detect APG7L in mouse liver tissue lysate. APG7L (arrow) was detected using the purified Pab.



APG7L Antibody (R509) (Cat. #[TA324635]) western blot analysis in HeLa cell line lysates (35ug/lane). This demonstrates the APG7L antibody detected the APG7L protein (arrow).



Formalin-fixed and paraffin-embedded human cancer tissue reacted with the primary antibody, which was peroxidase-conjugated to the secondary antibody, followed by AEC staining. This data demonstrates the use of this antibody for immunohistochemistry; clinical relevance has not been evaluated. BC = breast carcinoma; HC = hepatocarcinoma.



IF image of U251 cells stained with ATG7 antibody. U251 cells were treated with Chloroquine, then incubated with [TA324635] ATG7 primary antibody (1:200, 2 h at RT). For secondary antibody, Alexa Fluor® 488 conjugated donkey anti-rabbit antibody (green) was used (1:1000, 1h). Nuclei were counterstained with Hoechst 33342 (blue). ATG7 immunoreactivity is localized to autophagic vacuoles in the cytoplasm of U251 cells.