

Product datasheet for **TA324634S**

ATG5 Rabbit Polyclonal Antibody

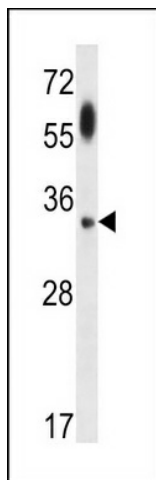
Product data:

Product Type:	Primary Antibodies
Applications:	IF, IHC, WB
Recommended Dilution:	IF: 1:200, WB: 1:1000, IHC: 1:10~50
Reactivity:	Human
Host:	Rabbit
Isotype:	IgG
Clonality:	Polyclonal
Immunogen:	This ATG5 antibody is generated from rabbits immunized with a KLH conjugated synthetic peptide selected from the full length of human ATG5.
Formulation:	Purified polyclonal antibody supplied in PBS with 0.09% (W/V) sodium azide.
Concentration:	lot specific
Purification:	This antibody is purified through a protein A column, followed by dialysis against PBS.
Conjugation:	Unconjugated
Storage:	Store at -20°C as received.
Stability:	Stable for 12 months from date of receipt.
Predicted Protein Size:	32447 Da
Gene Name:	autophagy related 5
Database Link:	NP_004840 Entrez Gene 9474 Human Q9H1Y0
Synonyms:	APG5; APG5-LIKE; APG5L; ASP; hAPG5
Protein Families:	Druggable Genome
Protein Pathways:	Regulation of autophagy, RIG-I-like receptor signaling pathway

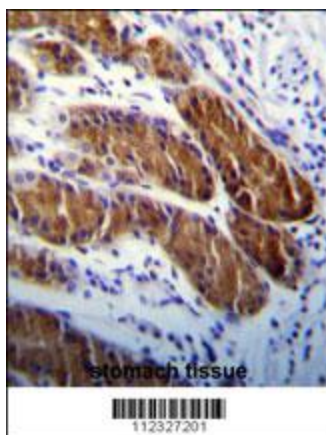


[View online »](#)

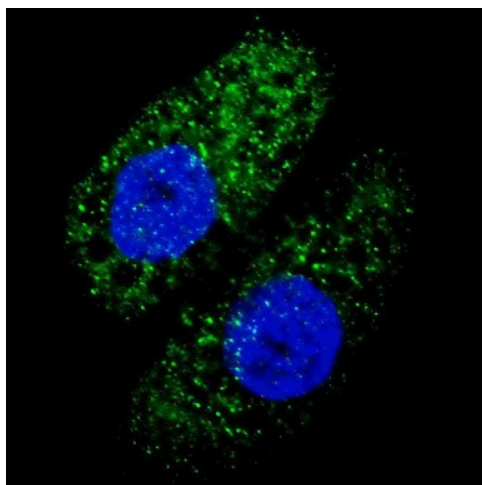
Product images:



ATG5 Antibody (Cat.#[TA324634]) western blot analysis in uterus tumor cell line lysates (35ug/lane). This demonstrates the ATG5 antibody detected the ATG5 protein (arrow).



ATG5 Antibody (Cat. # [TA324634]) immunohistochemistry analysis in formalin fixed and paraffin embedded human stomach tissue followed by peroxidase conjugation of the secondary antibody and DAB staining. This data demonstrates the use of ATG5 Antibody for immunohistochemistry. Clinical relevance has not been evaluated.



IF image of U251 cells stained with ATG5 antibody. U251 cells were treated with Chloroquine, then incubated with [TA324634] ATG5 primary antibody (1:200, 2 h at RT). For secondary antibody, Alexa Fluor® 488 conjugated donkey anti-rabbit antibody (green) was used (1:1000, 1 h). Nuclei were counterstained with Hoechst 33342 (blue). ATG5 immunoreactivity is localized to autophagic vacuoles in the cytoplasm of U251 cells.