

Product datasheet for **TA324633S**

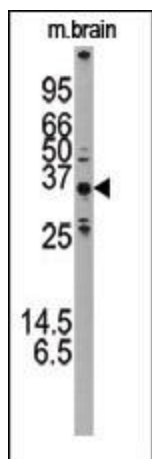
ATG5 Rabbit Polyclonal Antibody

Product data:

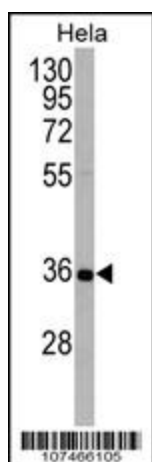
Product Type:	Primary Antibodies
Applications:	IF, IHC, WB
Recommended Dilution:	WB: 1:1000, IF: 1:200, IHC: 1:50~100
Reactivity:	Human, Mouse (Predicted: Rat, Bovine, Pig)
Host:	Rabbit
Isotype:	IgG
Clonality:	Polyclonal
Immunogen:	This ATG5 antibody is generated from rabbits immunized with a KLH conjugated synthetic peptide between 1-30 amino acids from the N-terminal region of human ATG5.
Formulation:	Purified polyclonal antibody supplied in PBS with 0.09% (W/V) sodium azide.
Concentration:	lot specific
Purification:	This antibody is prepared by Saturated Ammonium Sulfate (SAS) precipitation followed by dialysis against PBS.
Conjugation:	Unconjugated
Storage:	Store at -20°C as received.
Stability:	Stable for 12 months from date of receipt.
Predicted Protein Size:	32447 Da
Gene Name:	autophagy related 5
Database Link:	NP_004840 Entrez Gene 11793 Mouse Entrez Gene 365601 Rat Entrez Gene 9474 Human Q9H1Y0
Synonyms:	APG5; APG5-LIKE; APG5L; ASP; hAPG5
Protein Families:	Druggable Genome
Protein Pathways:	Regulation of autophagy, RIG-I-like receptor signaling pathway



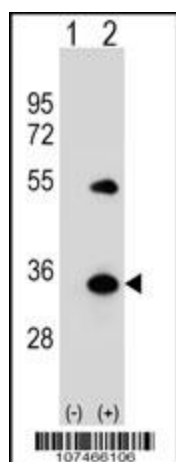
[View online »](#)

Product images:


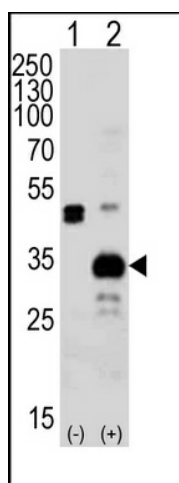
The anti-APG5L Pab (Cat. #TA324633) is used in Western blot to detect APG5L in mouse brain tissue lysate.



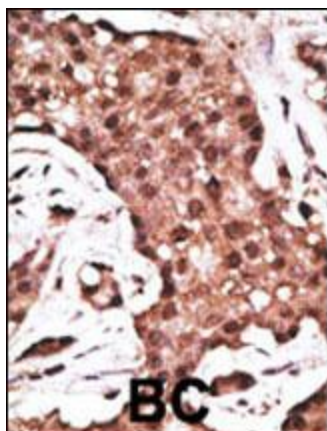
APG5L Antibody (D3) (Cat. #TA324633) western blot analysis in HeLa cell line lysates (35ug/lane). This demonstrates the APG5L antibody detected the APG5L protein (arrow).



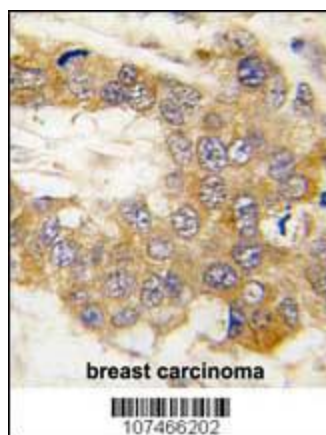
Western blot analysis of APG5L (arrow) using rabbit polyclonal APG5L Antibody (D3) (Cat. # [TA324633]). 293 cell lysates (2 ug/lane) either nontransfected (Lane 1) or transiently transfected (Lane 2) with the APG5L gene.



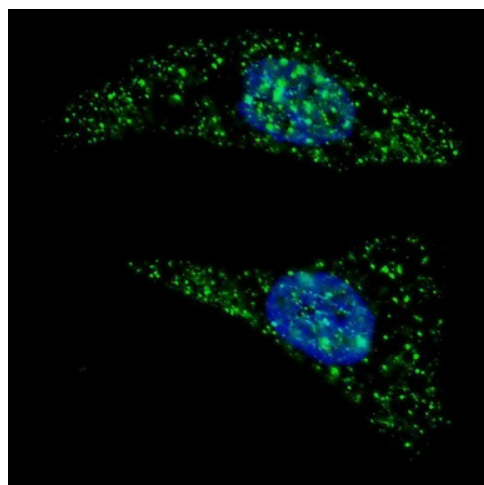
Western blot analysis of APG5L Antibody (D3) (arrow) using rabbit polyclonal APG5L Antibody (D3) (Cat. # [TA324633]). 293 cell lysates (2 ug/lane) either nontransfected (Lane 1) or transiently transfected (Lane 2) with the APG5L gene. A goat anti-rabbit IgG H&L (HRP) at 1:5000 dilution was used as the secondary antibody.



Formalin-fixed and paraffin-embedded human cancer tissue reacted with the primary antibody, which was peroxidase-conjugated to the secondary antibody, followed by DAB staining. This data demonstrates the use of this antibody for immunohistochemistry; clinical relevance has not been evaluated. BC = breast carcinoma; HC = hepatocarcinoma.



Formalin-fixed and paraffin-embedded human breast carcinoma tissue reacted with Autophagy APG5L antibody (N-term) (Cat.#[TA324633]), which was peroxidase-conjugated to the secondary antibody, followed by DAB staining. This data demonstrates the use of this antibody for immunohistochemistry; clinical relevance has not been evaluated.



IF image of U251 cells stained with ATG5 (N-term) antibody. U251 cells were treated with Chloroquine, then incubated with [TA324633] ATG5 (N-term) primary antibody (1:200, 2 h at RT). For secondary antibody, Alexa Fluor® 488 conjugated donkey anti-rabbit antibody (green) was used (1:1000, 1h). Nuclei were counterstained with Hoechst 33342 (blue). ATG5 immunoreactivity is localized to autophagic vacuoles in the cytoplasm of U251 cells.