

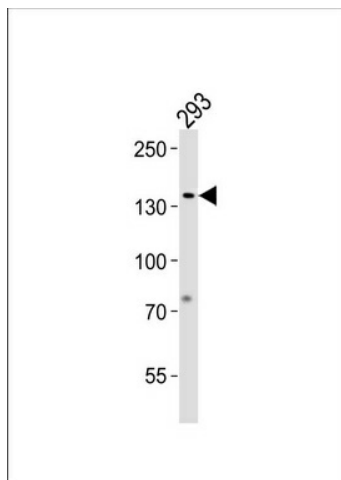
## Product datasheet for **TA324632S**

### TFII I (GTF2I) Rabbit Polyclonal Antibody

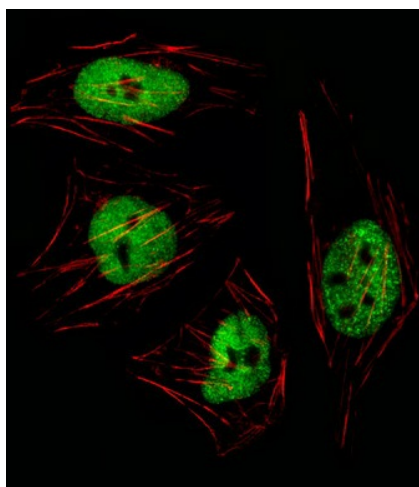
#### Product data:

Product Type:	Primary Antibodies
Applications:	IF, WB
Recommended Dilution:	IF: 1:10~50, WB: 1:1000
Reactivity:	Human (Predicted: Mouse, Rat)
Host:	Rabbit
Isotype:	IgG
Clonality:	Polyclonal
Immunogen:	This GTF2I antibody is generated from rabbits immunized with a KLH conjugated synthetic peptide between 281-310 amino acids from the N-terminal region of human GTF2I.
Formulation:	Purified polyclonal antibody supplied in PBS with 0.09% (W/V) sodium azide.
Concentration:	lot specific
Purification:	This antibody is purified through a protein A column, followed by peptide affinity purification.
Conjugation:	Unconjugated
Storage:	Store at -20°C as received.
Stability:	Stable for 12 months from date of receipt.
Predicted Protein Size:	112416 Da
Gene Name:	general transcription factor Iii
Database Link:	<a href="#">NP_127494</a> <a href="#">Entrez Gene 14886 Mouse</a> <a href="#">Entrez Gene 353256 Rat</a> <a href="#">Entrez Gene 2969 Human</a> <a href="#">P78347</a>
Synonyms:	BAP135; BTKAP1; DIWS; GTFII-I; IB291; SPIN; TFII-I; WBS; WBSCR6
Protein Families:	Transcription Factors
Protein Pathways:	Basal transcription factors


[View online »](#)

**Product images:**


GTF2I Antibody (N-term) (Cat. #TA324632])  
western blot analysis in 293 cell line lysates  
(35ug/lane). This demonstrates the GTF2I  
antibody detected the GTF2I protein (arrow).



IF image of HeLa cell stained with GTF2I Antibody  
(N-term) (Cat#[TA324632]/SA111012BI). HeLa cells  
were incubated with GTF2I primary antibody  
(1:25, 1 h at 37°C). For secondary antibody, Alexa  
Fluor® 488 conjugated donkey anti-rabbit  
antibody (green) was used (1:400). Cytoplasmic  
actin was counterstained with Alexa Fluor® 555  
(red) conjugated Phalloidin (7 units/ml). GTF2I  
immunoreactivity is localized to Nucleus  
significantly.