

Product datasheet for **TA324632**

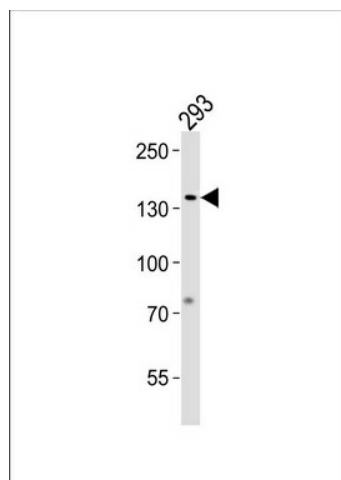
TFII I (GTF2I) Rabbit Polyclonal Antibody

Product data:

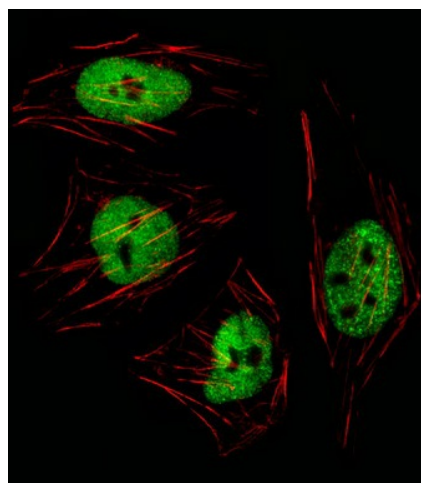
Product Type:	Primary Antibodies
Applications:	IF, WB
Recommended Dilution:	IF: 1:10~50, WB: 1:1000
Reactivity:	Human (Predicted: Mouse, Rat)
Host:	Rabbit
Isotype:	IgG
Clonality:	Polyclonal
Immunogen:	This GTF2I antibody is generated from rabbits immunized with a KLH conjugated synthetic peptide between 281-310 amino acids from the N-terminal region of human GTF2I.
Formulation:	Purified polyclonal antibody supplied in PBS with 0.09% (W/V) sodium azide.
Concentration:	lot specific
Purification:	This antibody is purified through a protein A column, followed by peptide affinity purification.
Conjugation:	Unconjugated
Storage:	Store at -20°C as received.
Stability:	Stable for 12 months from date of receipt.
Predicted Protein Size:	112416 Da
Gene Name:	general transcription factor Iii
Database Link:	NP_127494 Entrez Gene 14886 MouseEntrez Gene 353256 RatEntrez Gene 2969 Human P78347
Synonyms:	BAP135; BTKAP1; DIWS; GTFII-I; IB291; SPIN; TFII-I; WBS; WBSCR6
Protein Families:	Transcription Factors
Protein Pathways:	Basal transcription factors



[View online »](#)

Product images:

GTF2I Antibody (N-term) (Cat. #TA324632) western blot analysis in 293 cell line lysates (35ug/lane). This demonstrates the GTF2I antibody detected the GTF2I protein (arrow).



IF image of HeLa cell stained with GTF2I Antibody (N-term) (Cat#TA324632/SA111012BI). HeLa cells were incubated with GTF2I primary antibody (1:25, 1 h at 37°C). For secondary antibody, Alexa Fluor® 488 conjugated donkey anti-rabbit antibody (1:400). Cytoplasmic actin was counterstained with Alexa Fluor® 555 (red) conjugated Phalloidin (7 units/ml). GTF2I immunoreactivity is localized to Nucleus significantly.