

## Product datasheet for **TA324630S**

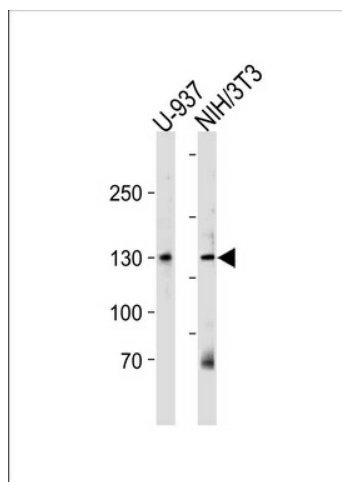
### TIF1 alpha (TRIM24) Rabbit Polyclonal Antibody

#### Product data:

Product Type:	Primary Antibodies
Applications:	WB
Recommended Dilution:	WB: 1:1000
Reactivity:	Human, Mouse
Host:	Rabbit
Isotype:	IgG
Clonality:	Polyclonal
Immunogen:	This TRIM24 antibody is generated from rabbits immunized with a KLH conjugated synthetic peptide between 16-45 amino acids from the N-terminal region of human TRIM24.
Formulation:	Purified polyclonal antibody supplied in PBS with 0.09% (W/V) sodium azide.
Concentration:	lot specific
Purification:	This antibody is purified through a protein A column, followed by peptide affinity purification.
Conjugation:	Unconjugated
Storage:	Store at -20°C as received.
Stability:	Stable for 12 months from date of receipt.
Predicted Protein Size:	116831 Da
Gene Name:	tripartite motif containing 24
Database Link:	<a href="#">NP_003843</a> <a href="#">Entrez Gene 21848 Mouse</a> <a href="#">Entrez Gene 8805 Human</a> <a href="#">Q15164</a>
Synonyms:	hTIF1; PTC6; RNF82; TF1A; TIF1; TIF1A; TIF1ALPHA
Protein Families:	Druggable Genome, Protein Kinase, Transcription Factors



[View online »](#)

**Product images:**

TRIM24 Antibody ( N-term) (Cat. #[TA324630])  
western blot analysis in U-937, mouse NIH/3T3  
cell line lysates (35ug/lane).This demonstrates the  
TRIM24 antibody detected the TRIM24 protein  
(arrow).