

Product datasheet for **TA324629S**

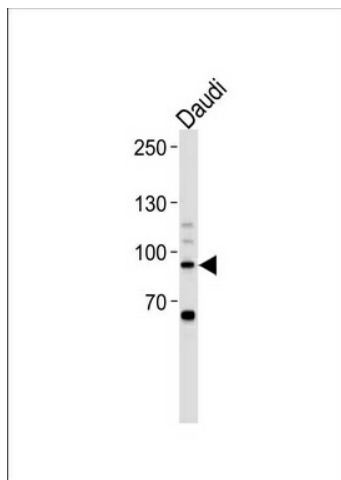
STAT3 Rabbit Polyclonal Antibody

Product data:

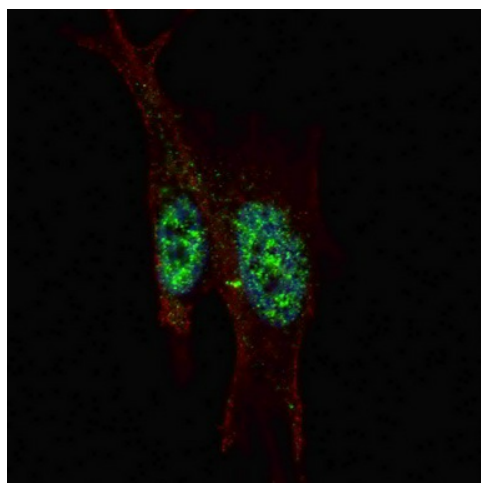
Product Type:	Primary Antibodies
Applications:	IF, WB
Recommended Dilution:	WB: 1:1000, IF: 1:200
Reactivity:	Human
Host:	Rabbit
Isotype:	IgG
Clonality:	Polyclonal
Immunogen:	This STAT3 antibody is generated from rabbits immunized with a KLH conjugated synthetic peptide from the C-terminal region of human STAT3, aa 711-743.
Formulation:	Purified polyclonal antibody supplied in PBS with 0.09% (W/V) sodium azide.
Concentration:	lot specific
Purification:	This antibody is purified through a protein A column, followed by peptide affinity purification.
Conjugation:	Unconjugated
Storage:	Store at -20°C as received.
Stability:	Stable for 12 months from date of receipt.
Predicted Protein Size:	88068 Da
Gene Name:	signal transducer and activator of transcription 3
Database Link:	NP_003141 Entrez Gene 6774 Human P40763
Synonyms:	ADMIO; APRF; HIES
Protein Families:	Druggable Genome, Transcription Factors
Protein Pathways:	Acute myeloid leukemia, Adipocytokine signaling pathway, Chemokine signaling pathway, Jak-STAT signaling pathway, Pancreatic cancer, Pathways in cancer

[View online »](#)

Product images:



STAT3 Antibody (pS727) (Cat. # [TA324629]) western blot analysis in Daudi cell line lysates (35ug/lane). This demonstrates the STAT3 antibody detected the STAT3 protein (arrow).



IF image of SY5Y cells stained with STAT3 (C-term S727) antibody. SY5Y cells were incubated with [TA324629] STAT3 (C-term S727) primary antibody (1:200, 2 h at RT). For secondary antibody, Alexa Fluor® 488 conjugated donkey anti-rabbit antibody (green) was used (1:1000, 1h). Nuclei were counterstained with Hoechst 33342 (blue). Note the highly specific localization of the STAT3 mainly to the nucleus, supported by Human Protein Atlas Data (<http://www.proteinatlas.org/ENSG00000168610>).